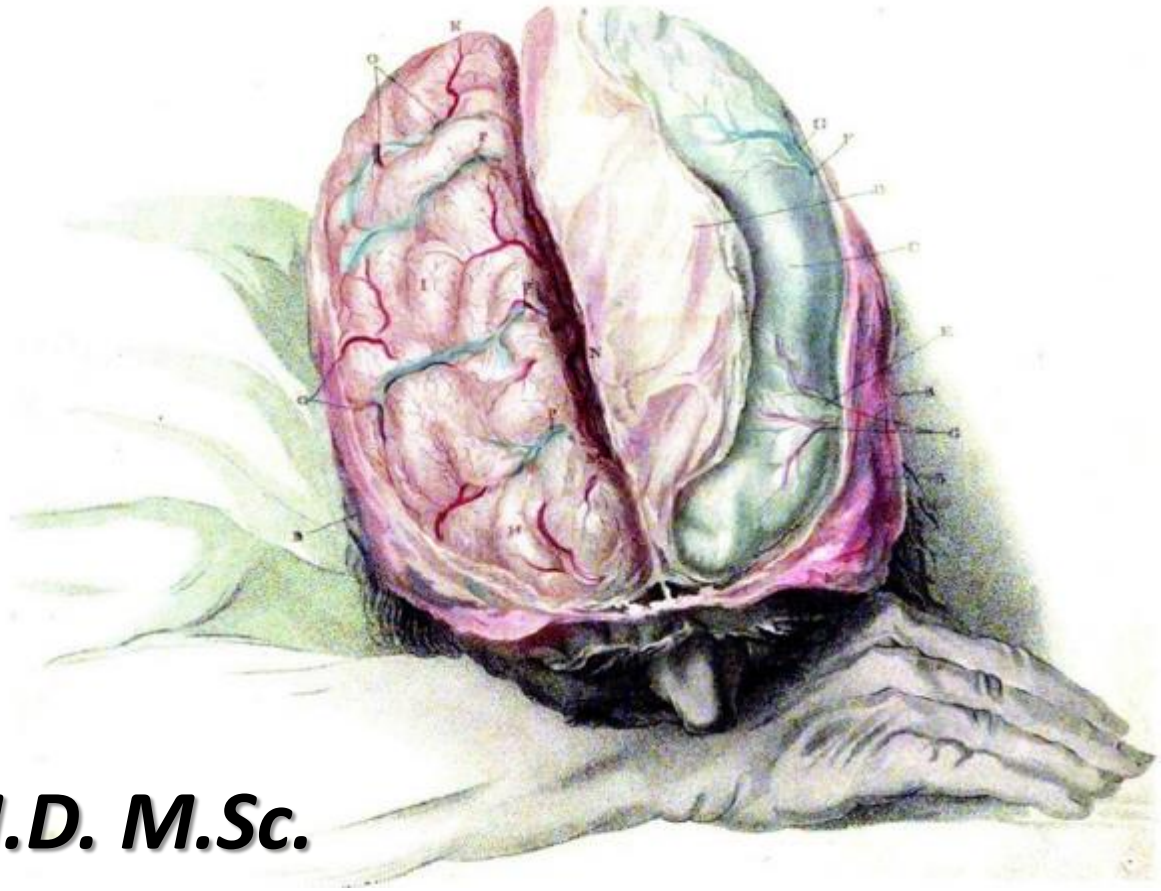


Corteza Cerebral

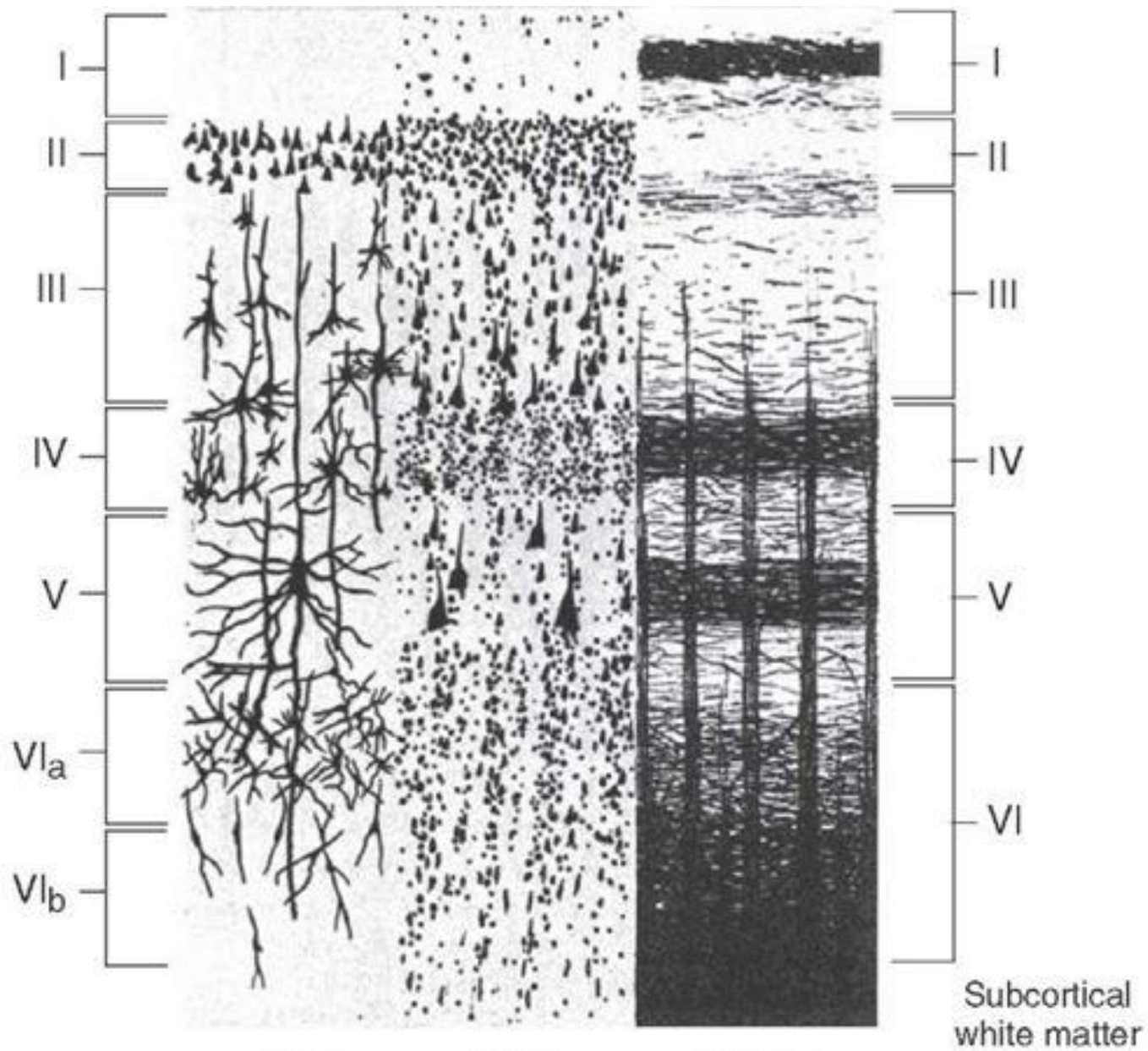


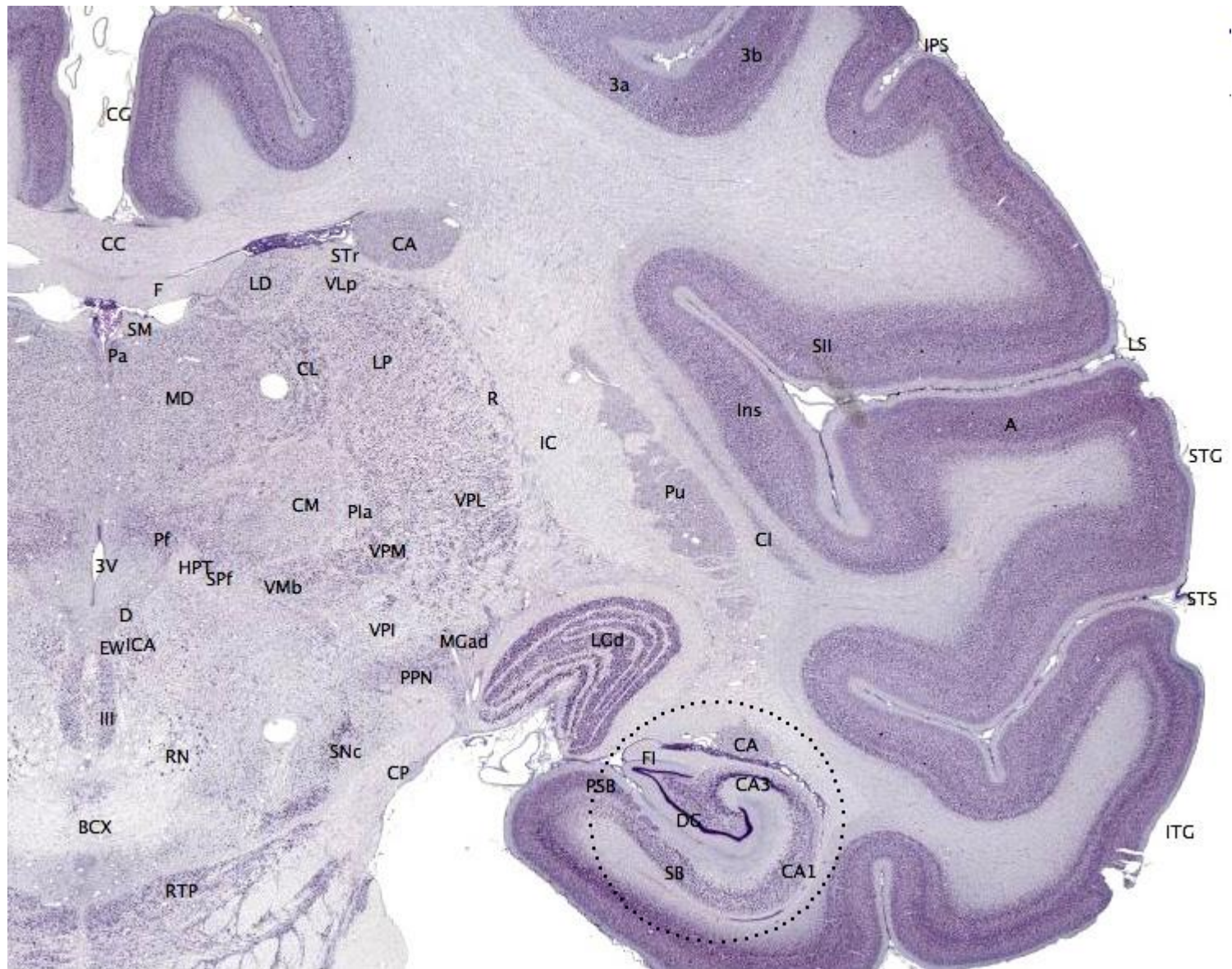
Nelson D. Villalba M.D. M.Sc.

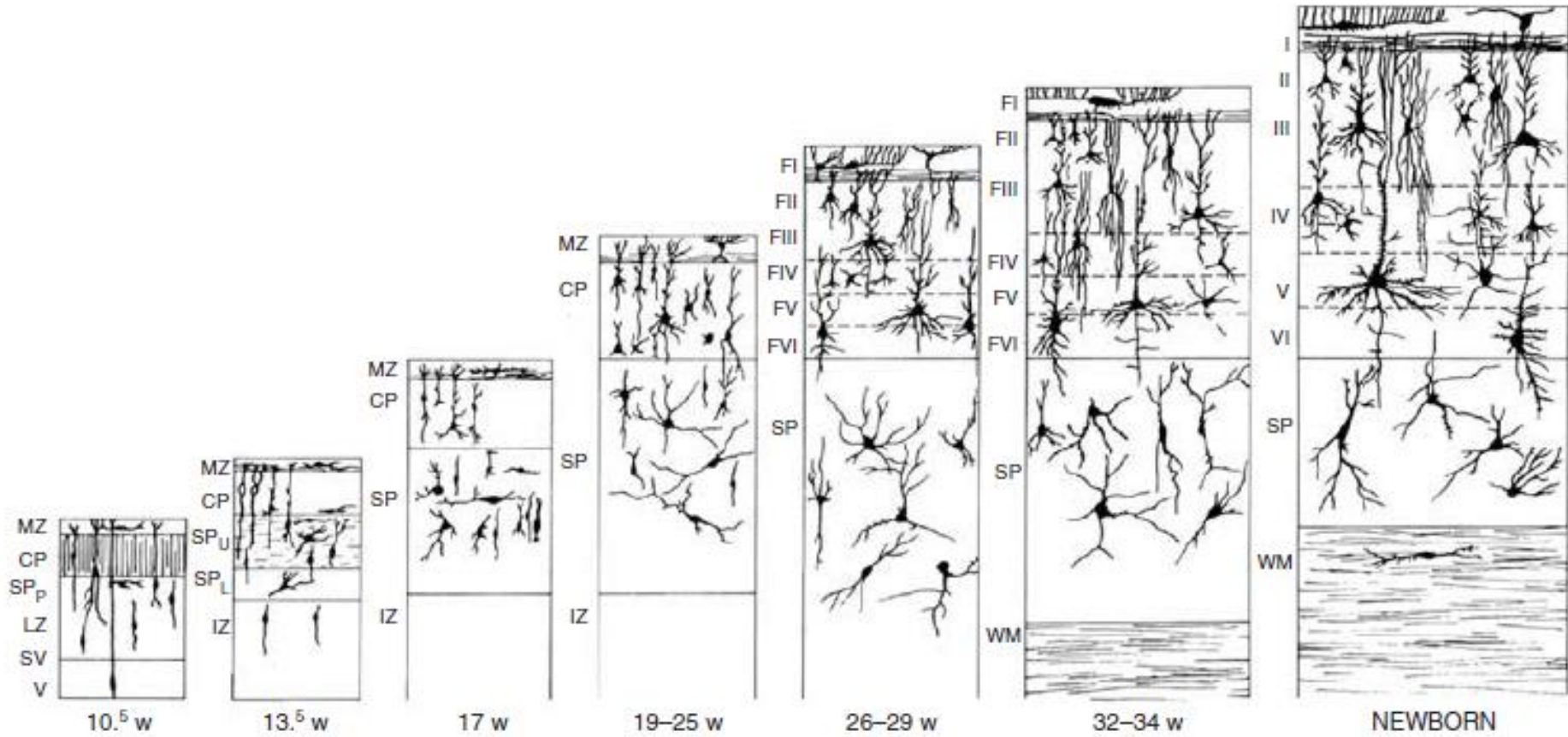
Los hombres deben saber que del cerebro y solo de él vienen las alegrías, las delicias, el placer, la risa y también, el sufrimiento, el dolor y los lamentos [...] Y por el mismo órgano nos volvemos locos y deliramos y el miedo y los terrores nos asaltan.

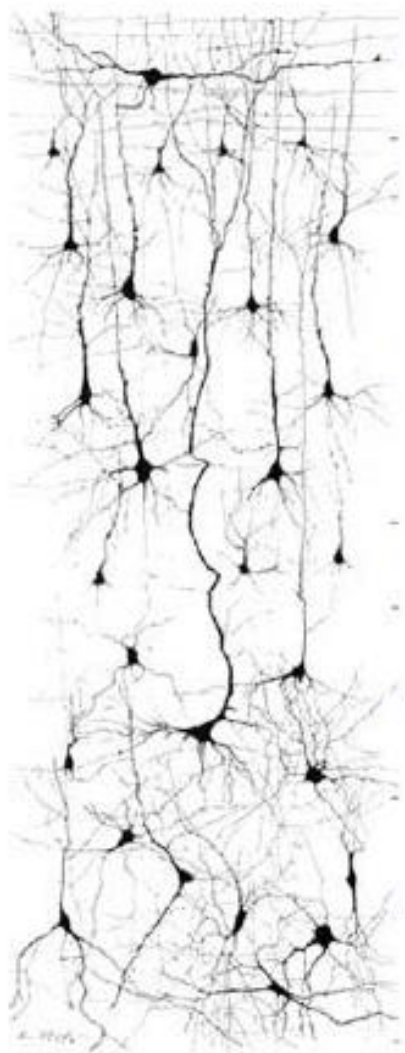
*Es el máximo poder en el hombre.
Es nuestro intérprete de aquellas cosas que están en el aire...*

Hipócrates (460 - 370 a. C)

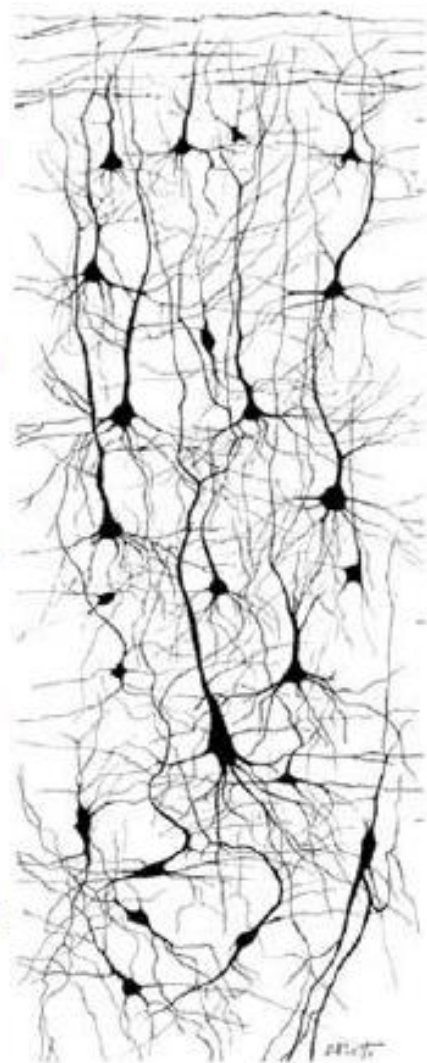




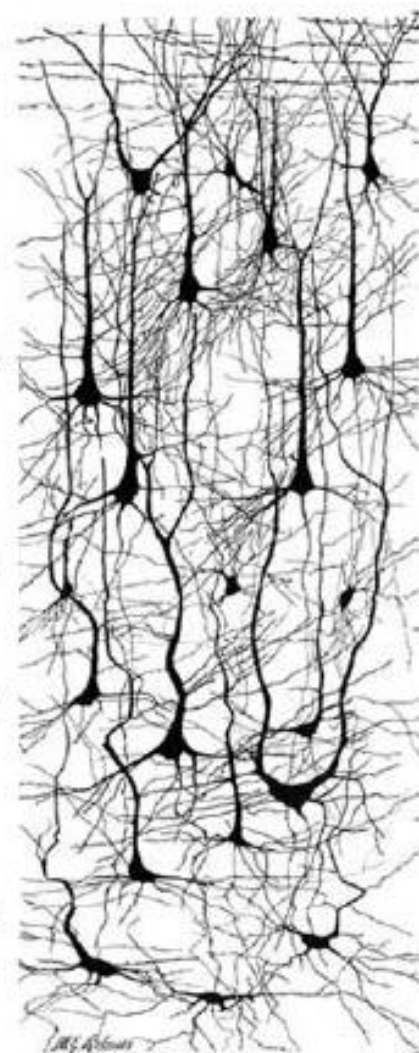




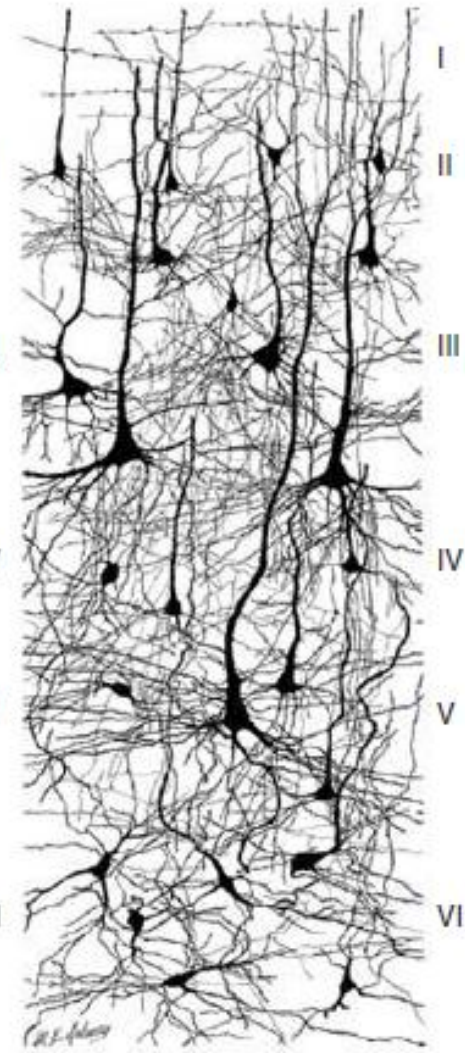
3 mo.



6 mo.

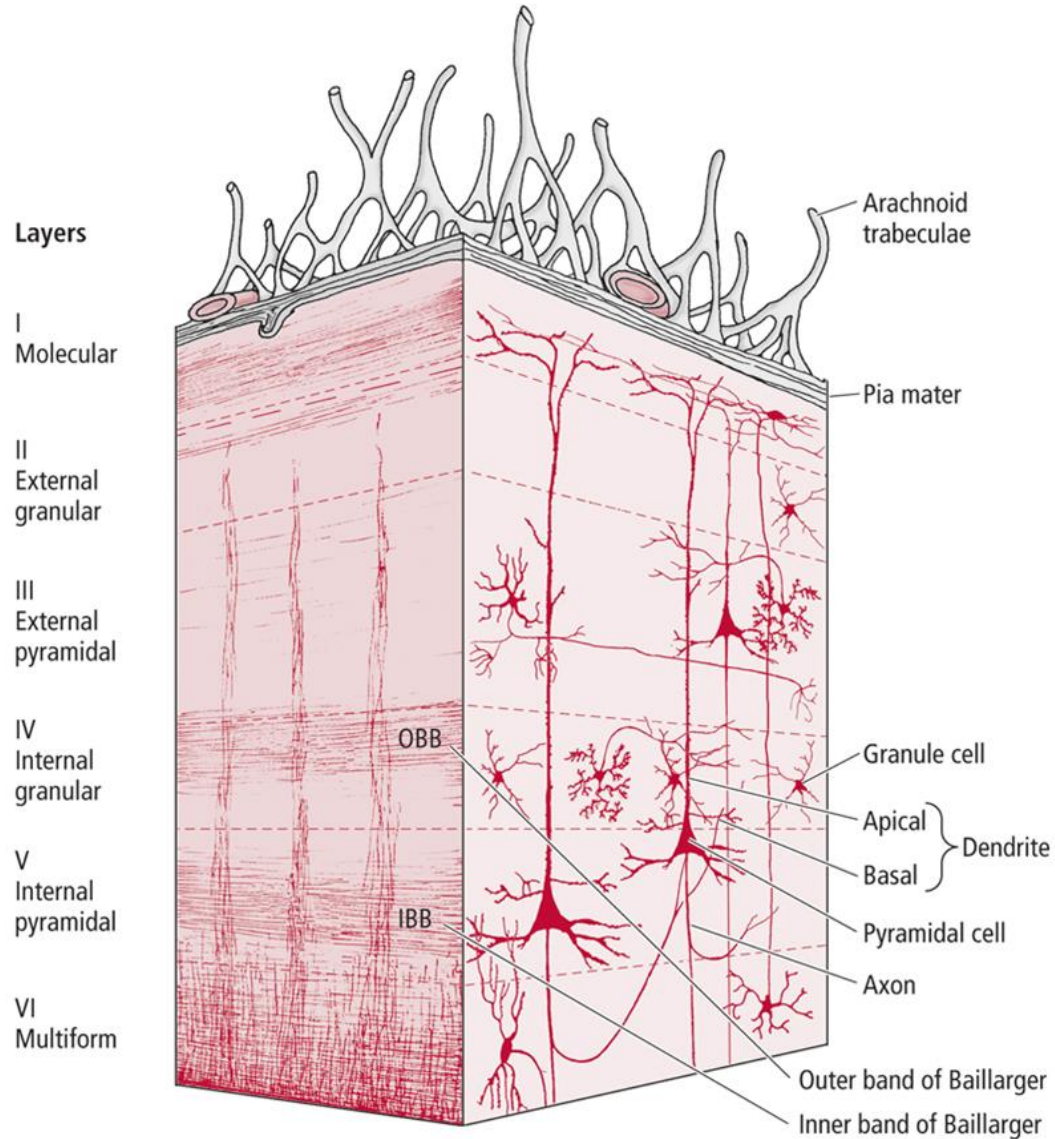


15 mo.



24 mo.

Organización Laminar



The 6 Layers of The Cerebral Neocortex

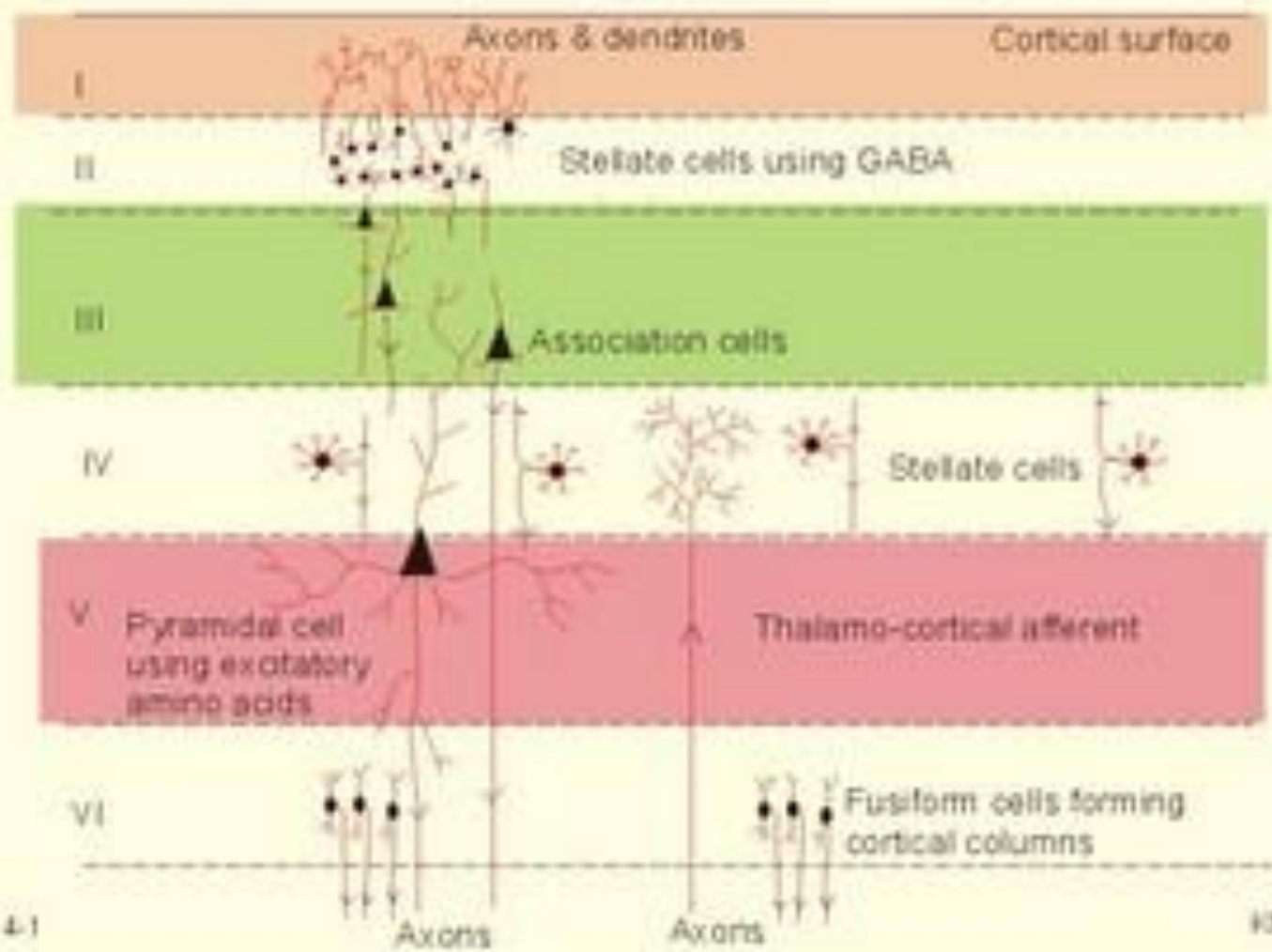
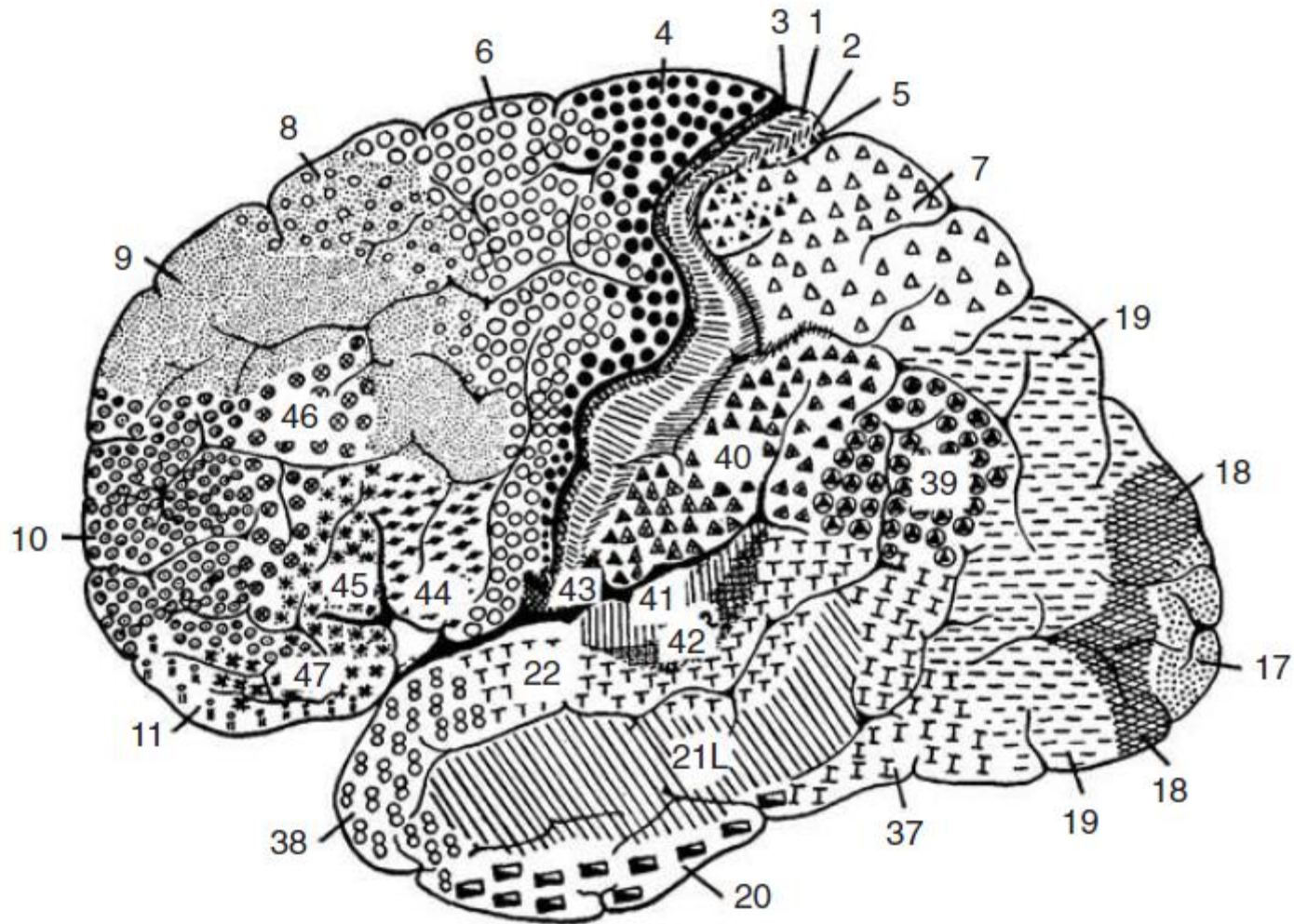


Fig. 4-1

Organización Laminar

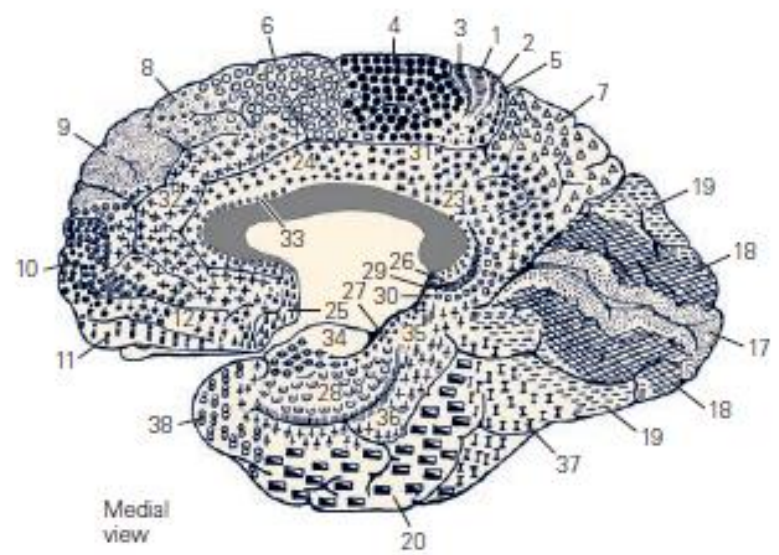
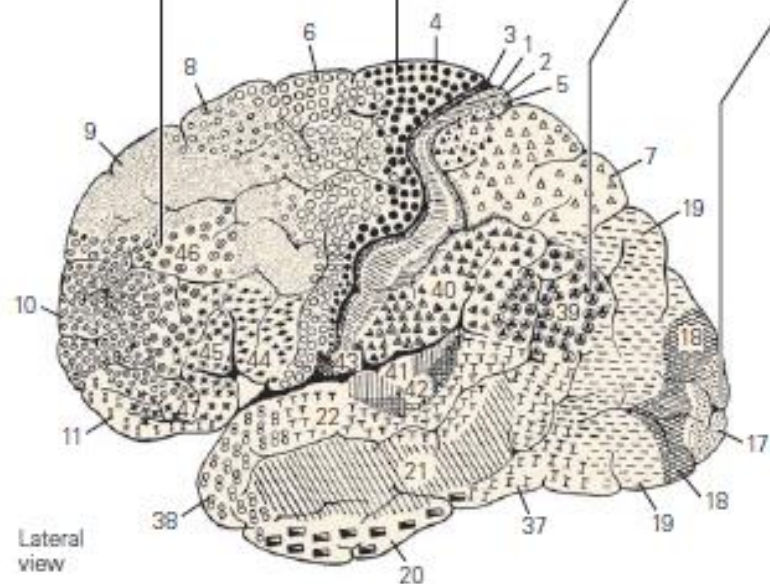
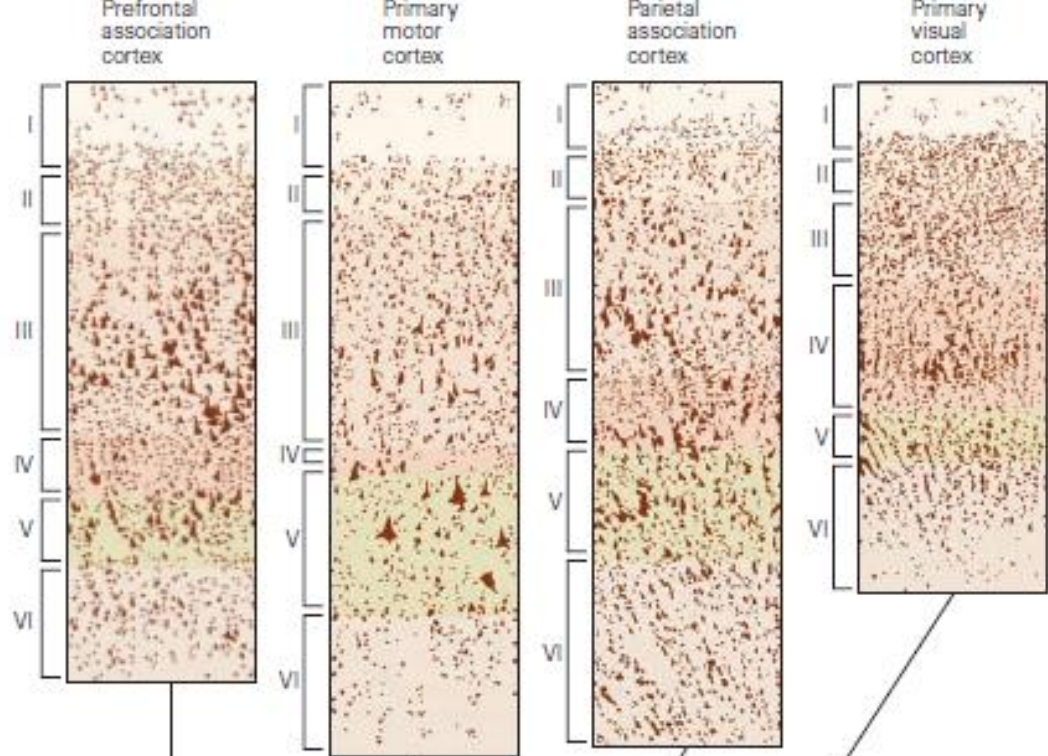


Organización Laminar

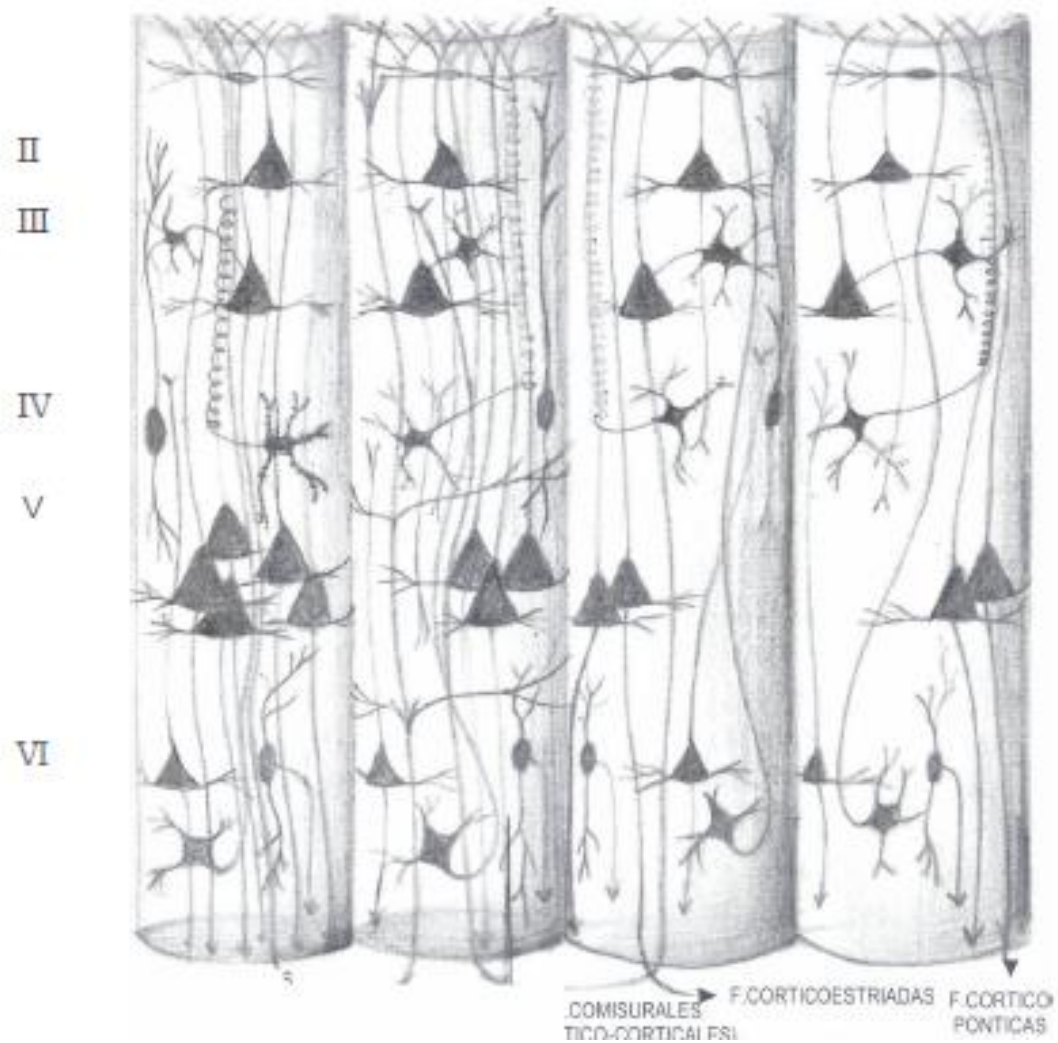
Figura 2. Progresión de la arquicorteza, la paleocorteza y las zonas de transición hacia la neocorteza.

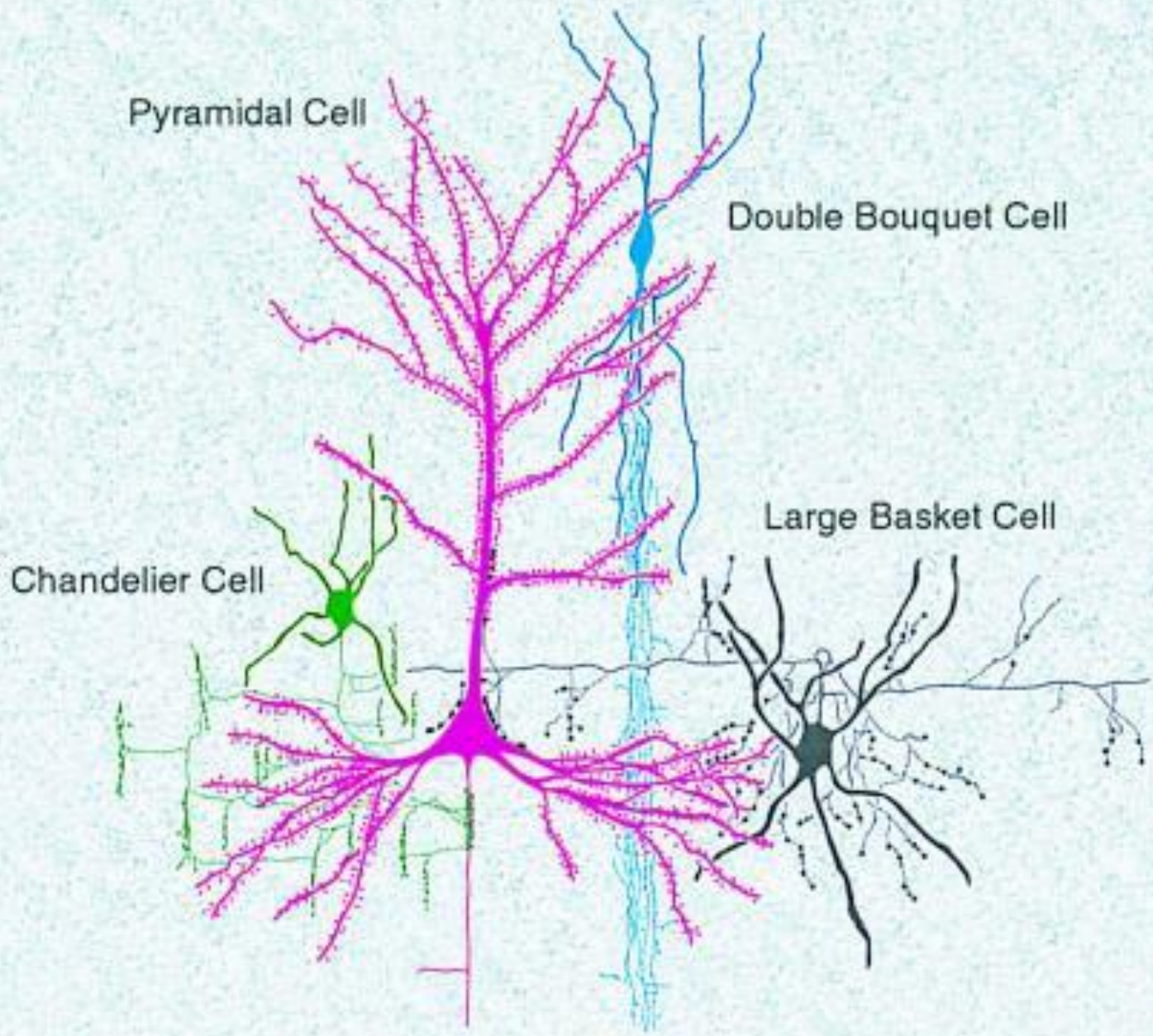
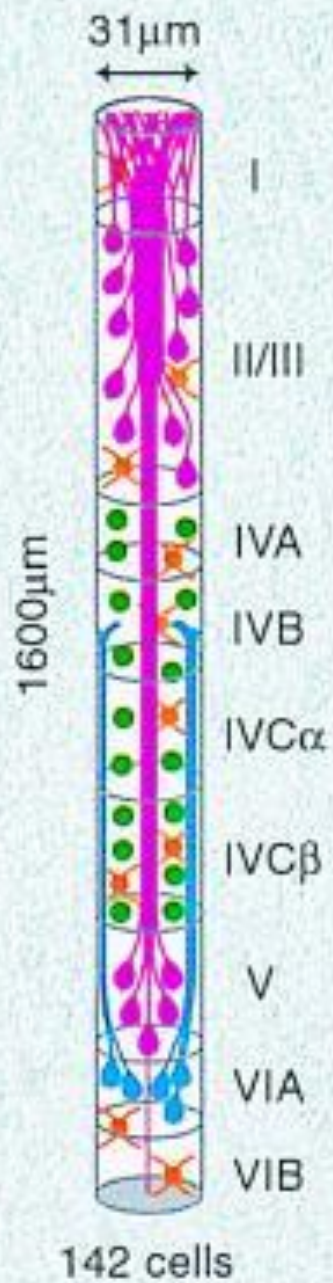


Nota: en la figura, la línea doble muestra una conexión recíproca entre los extremos del espectro.



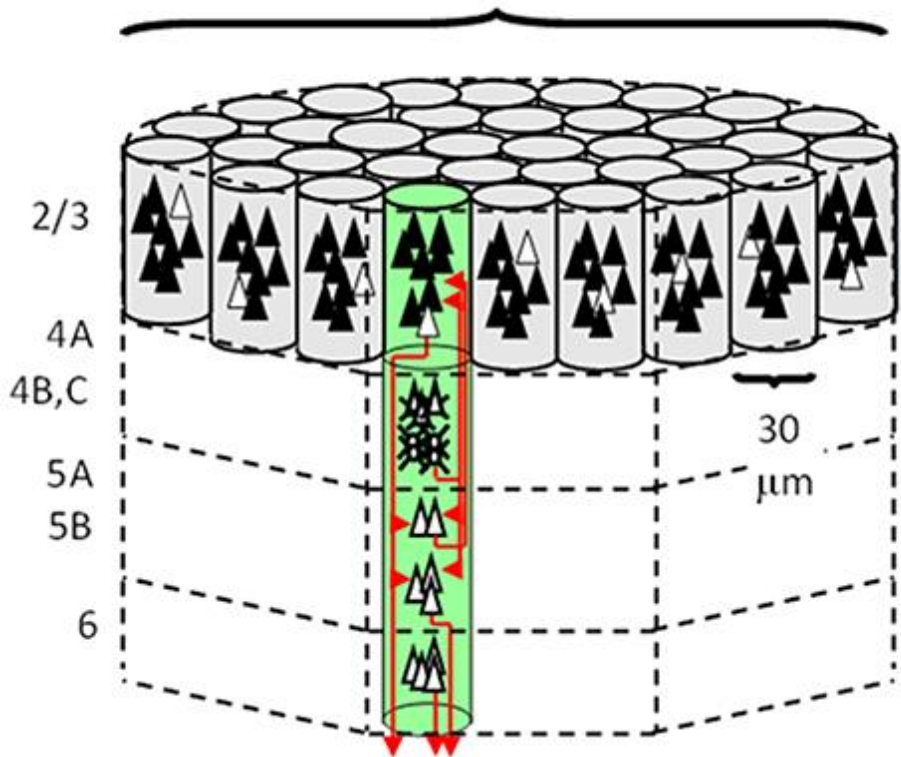
Organización Columnar



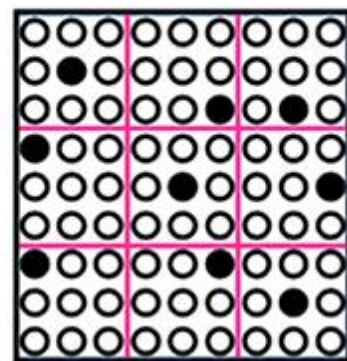
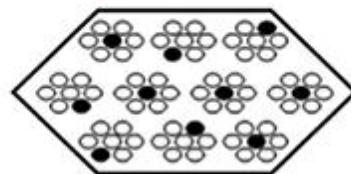
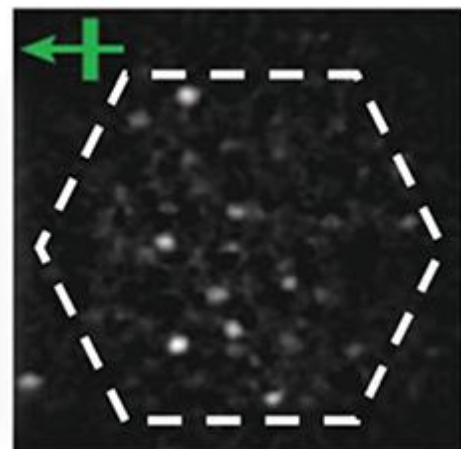


Macrocolumn, "Mac"

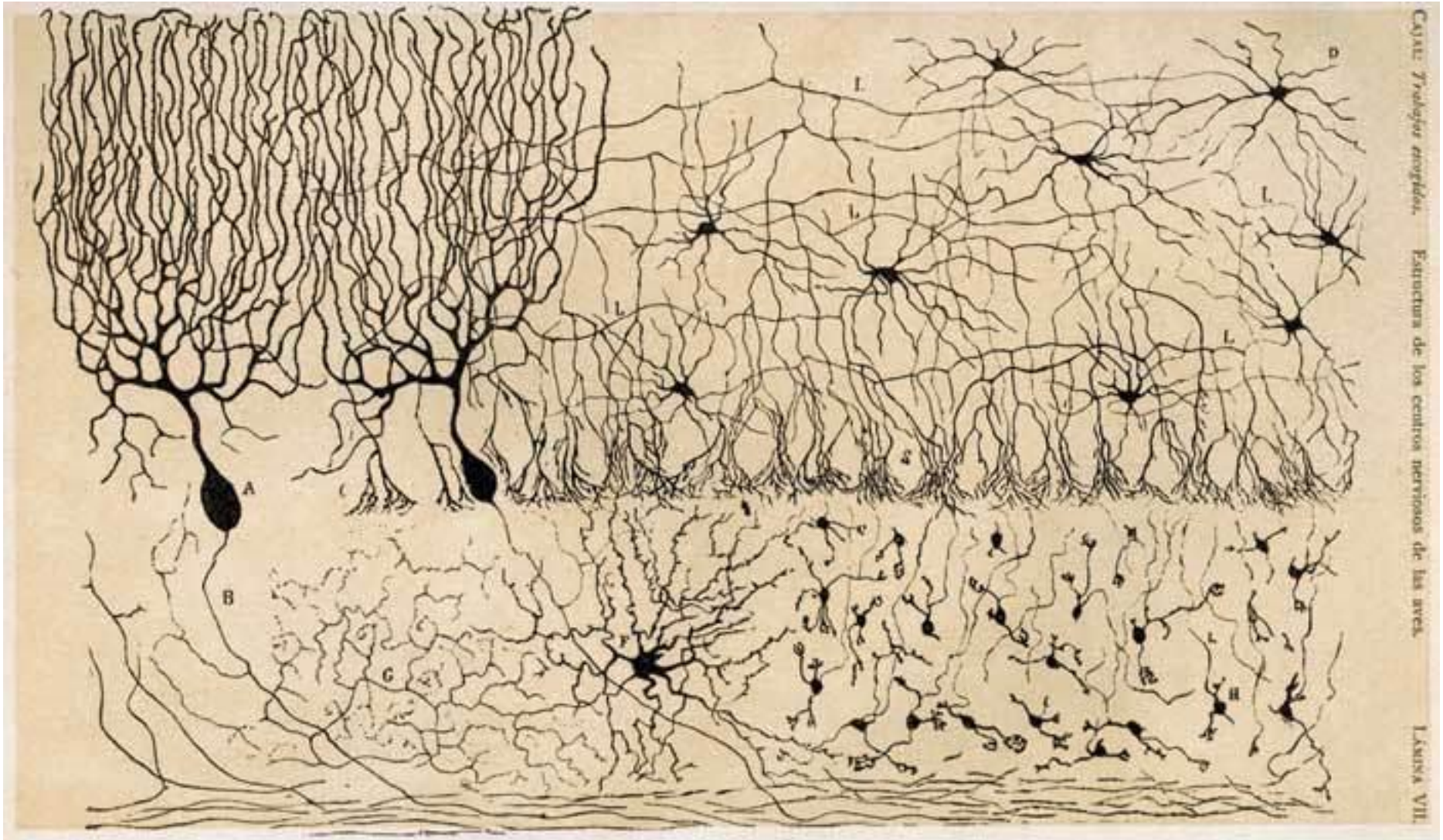
300-500 μm



2-photon
calcium
Imaging



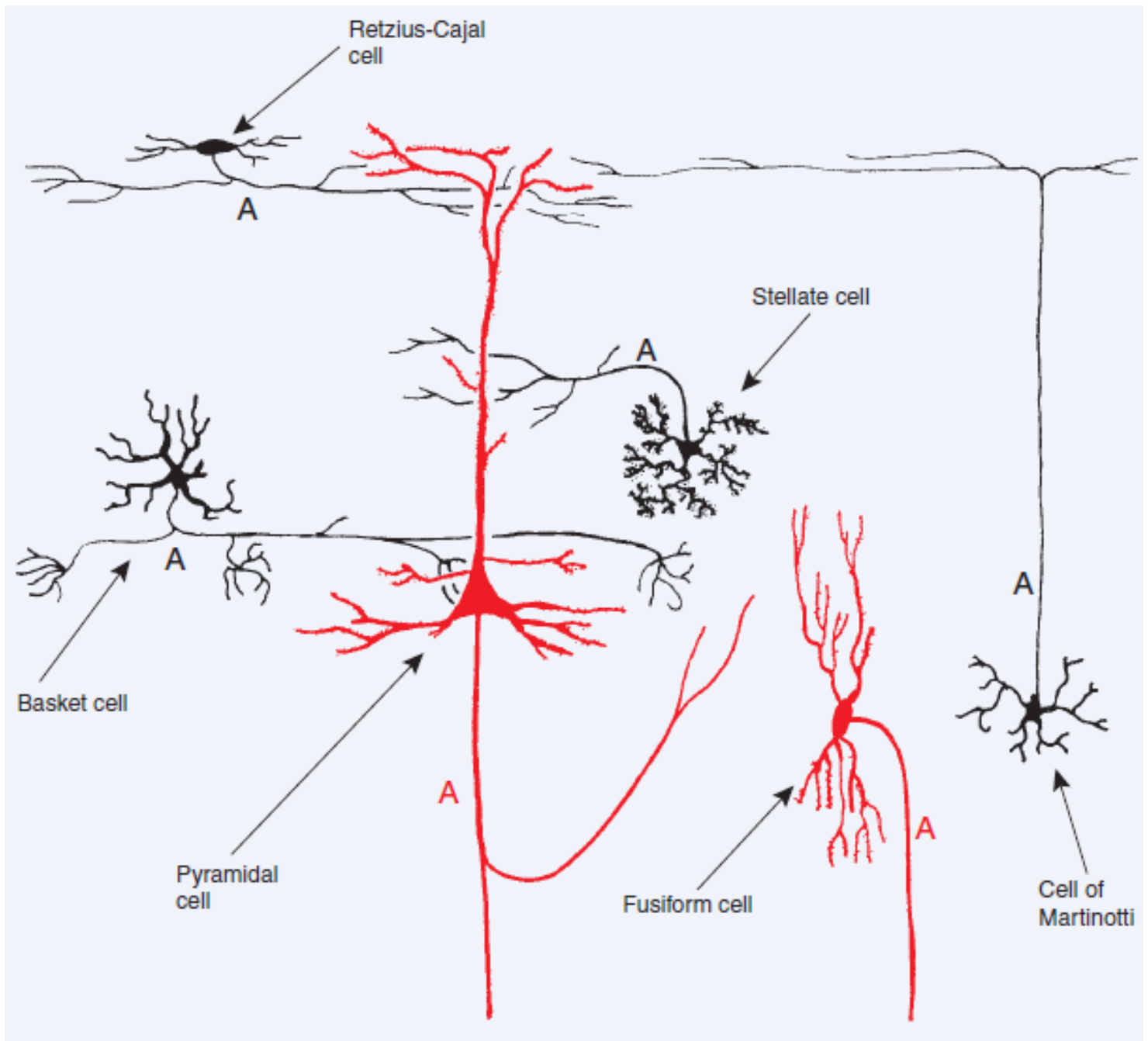
Tipos Celulares



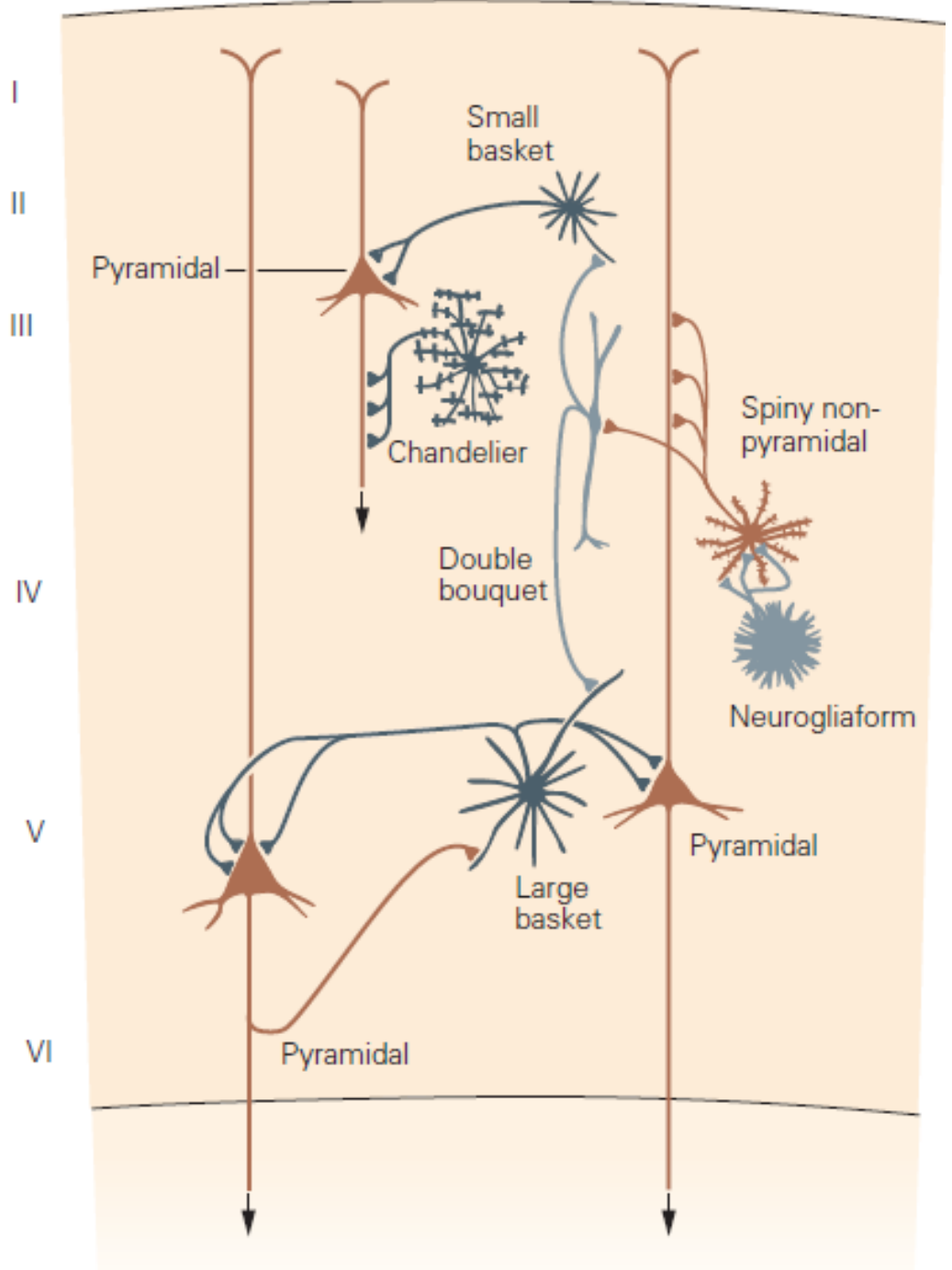
Tipos Celulares

- Células Piramidales
- Células Estrelladas
- Células Fusiformes
- Horizontales de Cajal
- Células de Martinotti

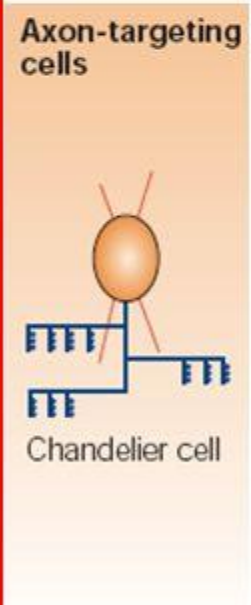
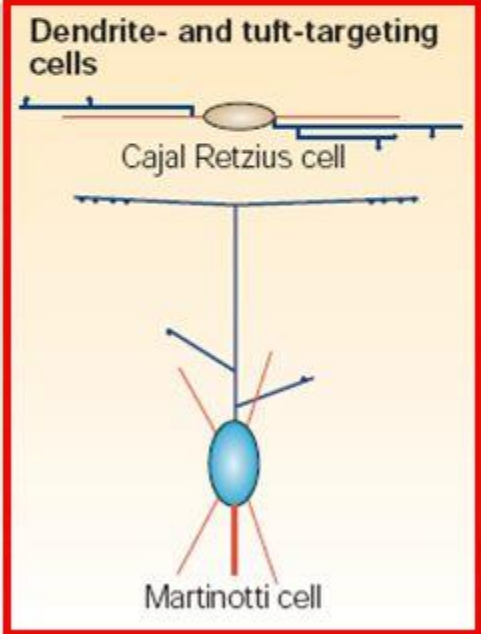
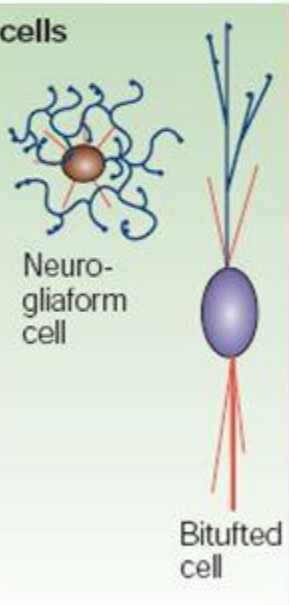
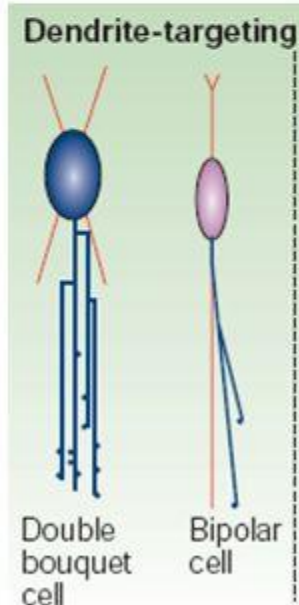
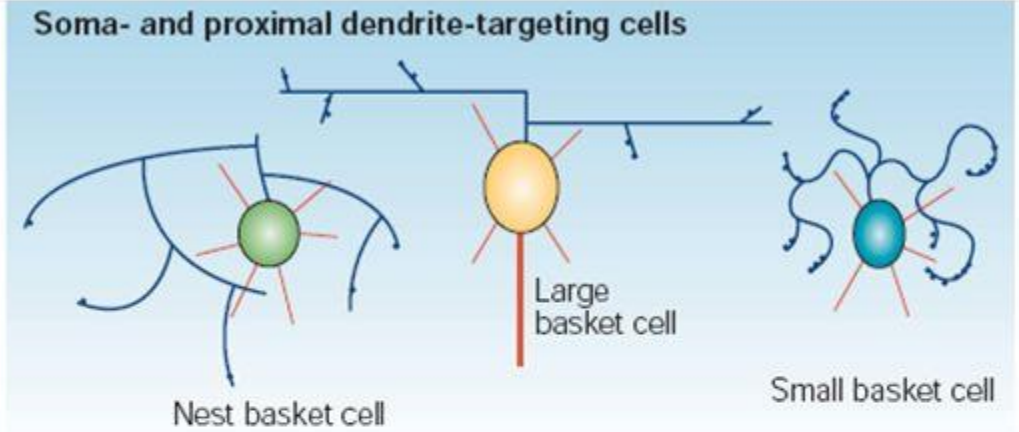
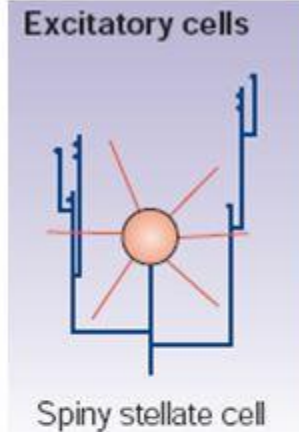
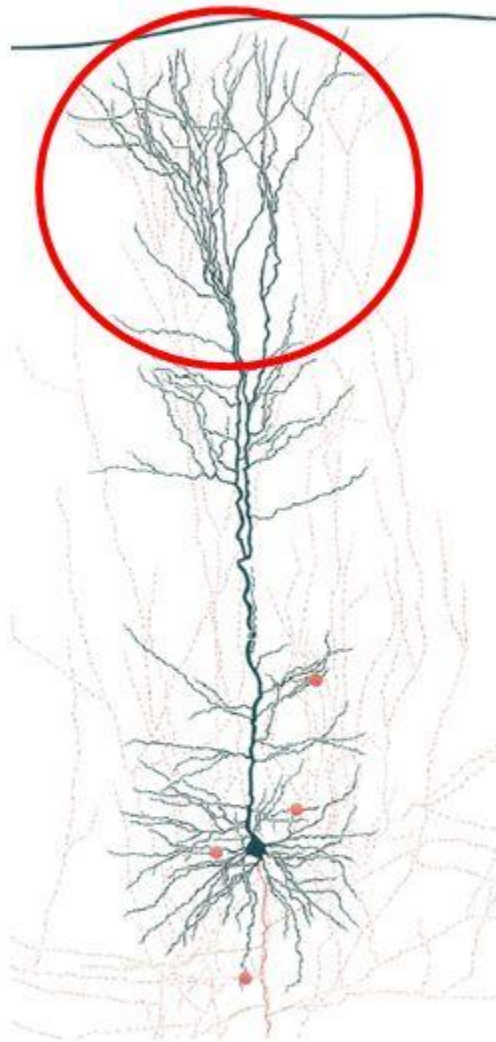
Tipos Celulares

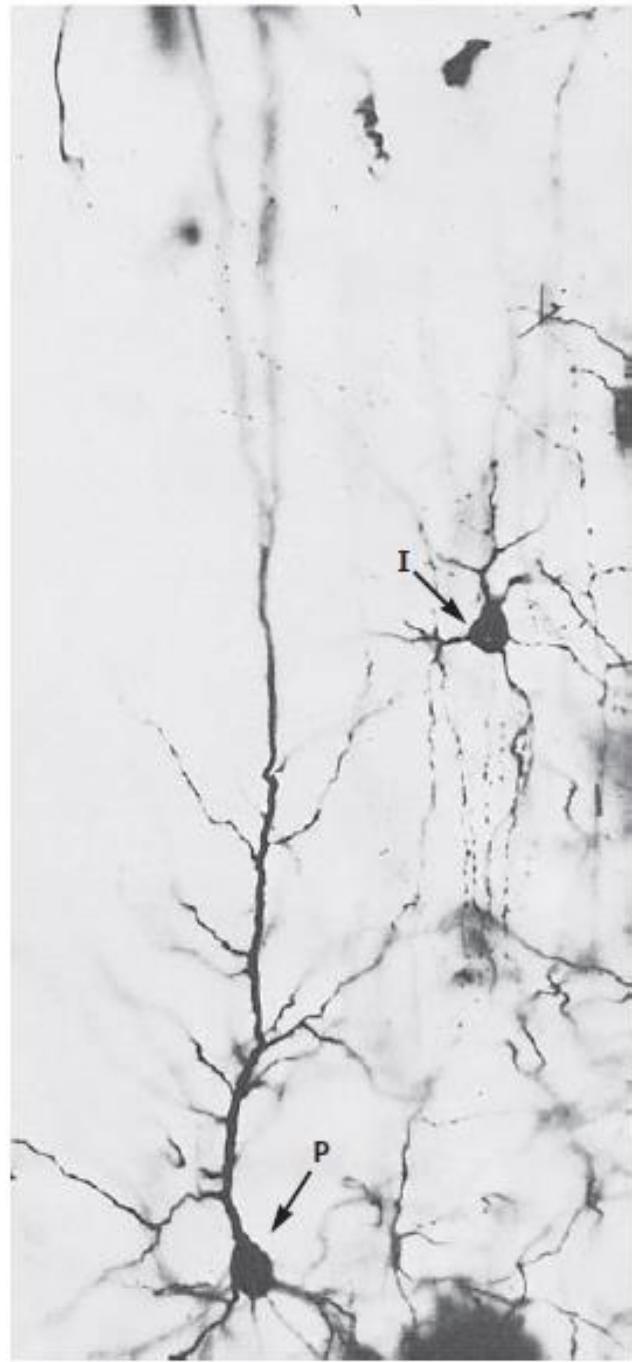
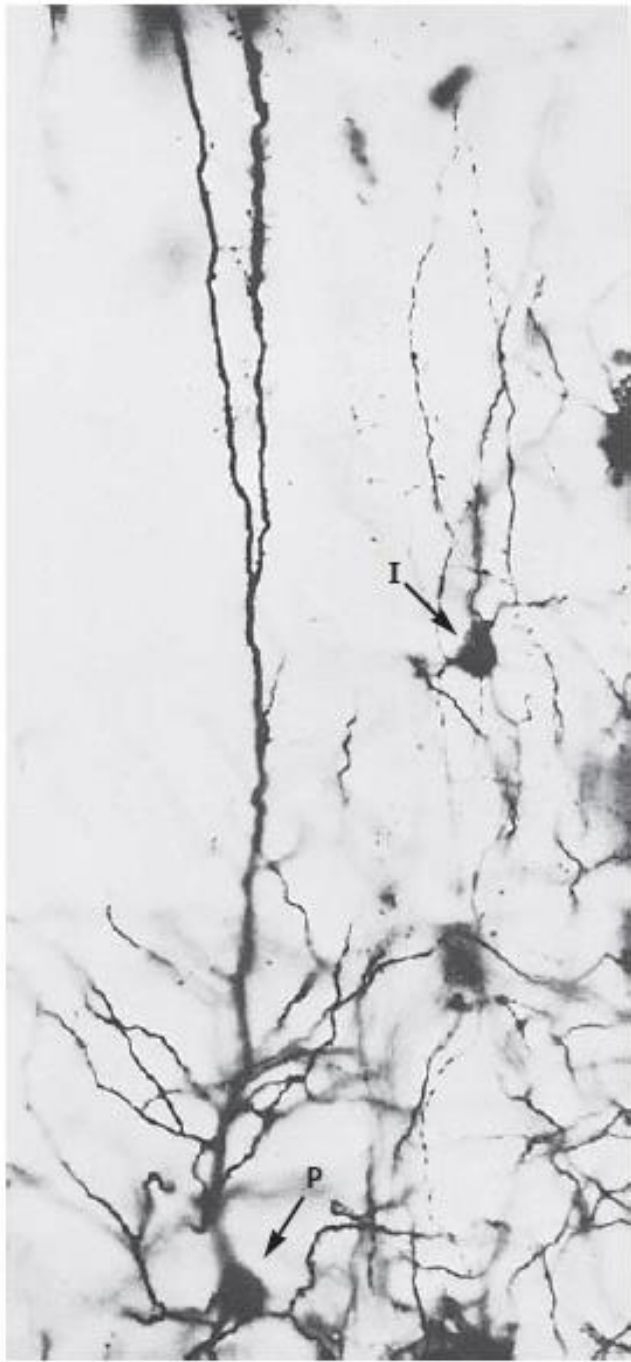


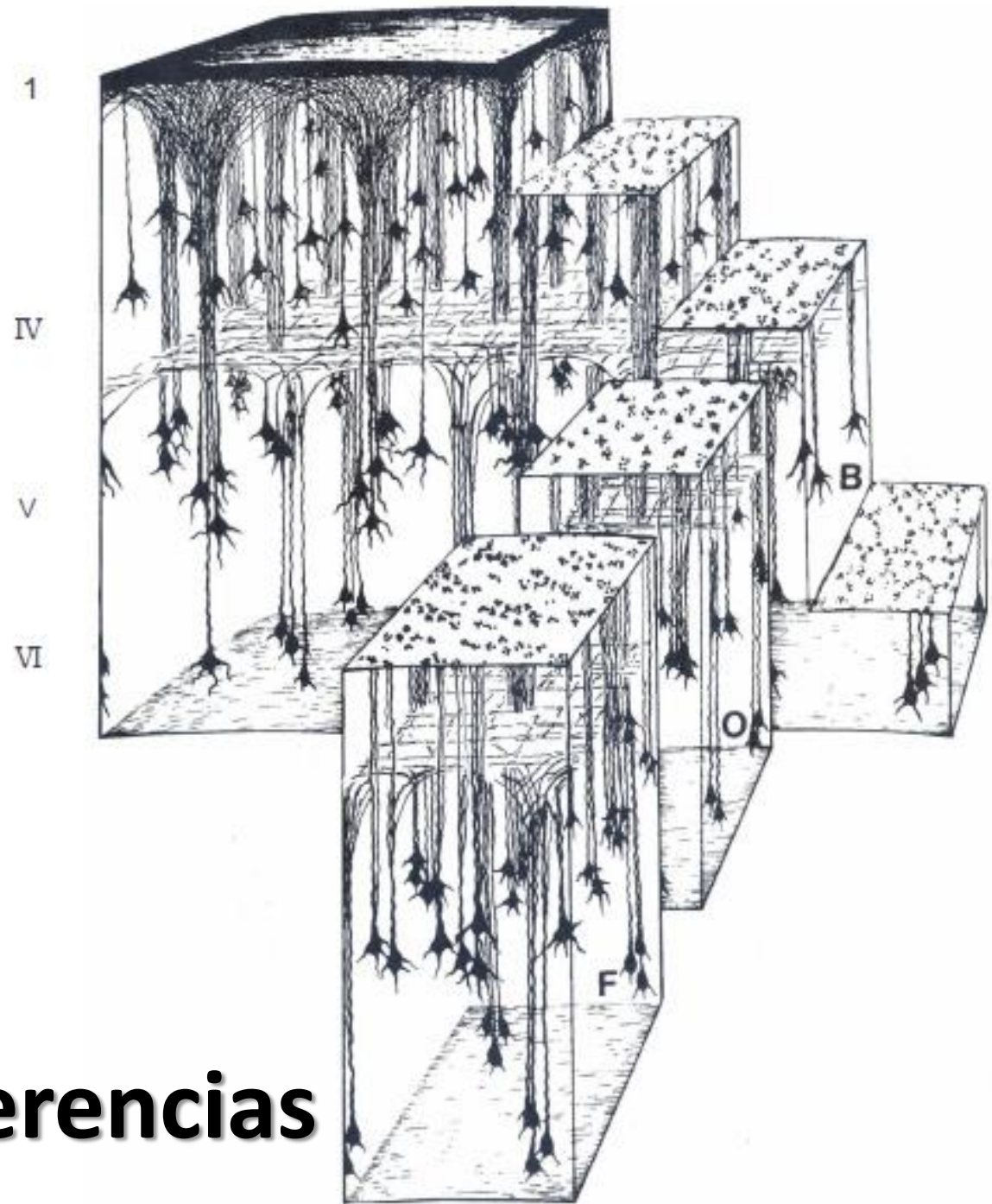
Tipos Celulares



Connections between interneurons & pyramidal neurons







Aferencias y Eferencias

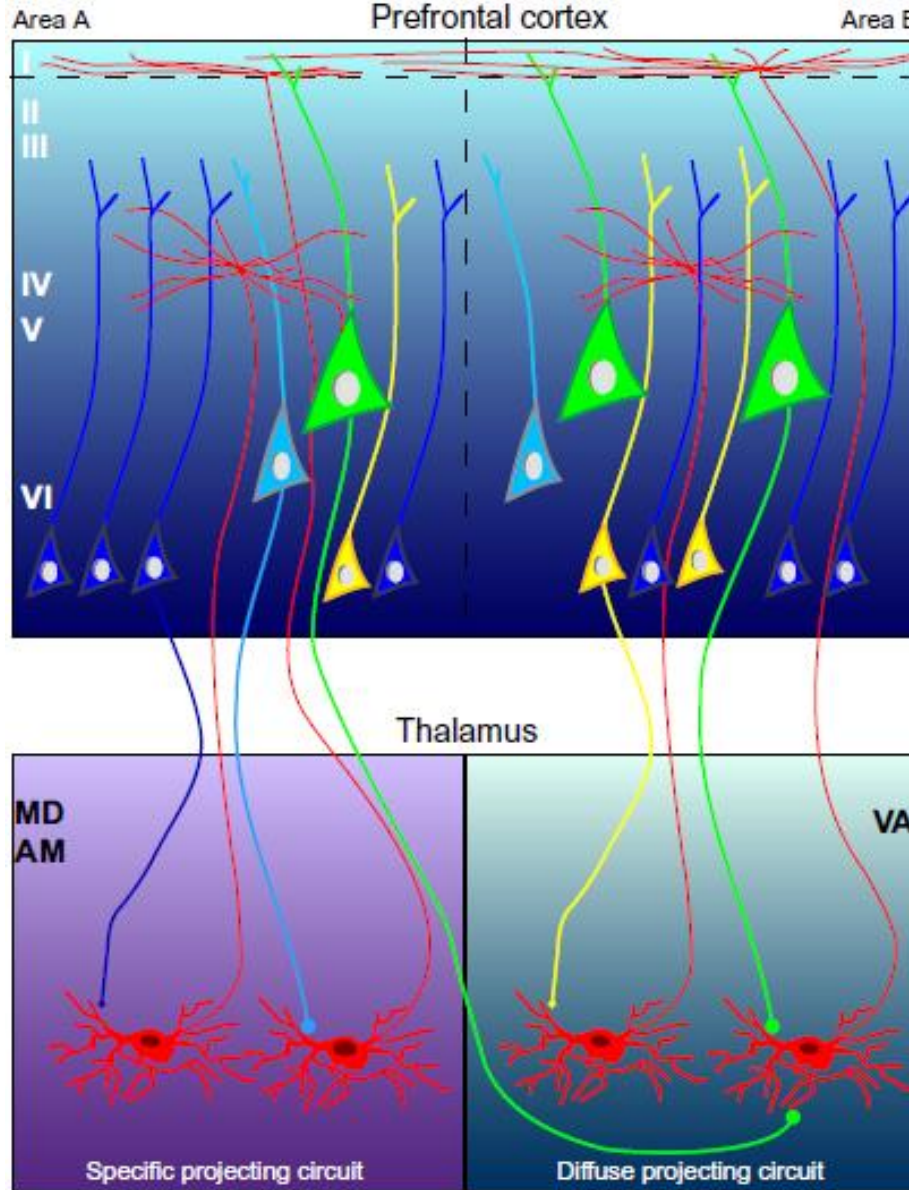
Aferencias

- Estructuras Subcorticales – Tálamo
- Otras áreas corticales – Fibras Asociativas
- Áreas Corticales H. Opuesto – Fibras Comisurales
- Fibras del Tallo Cerebral

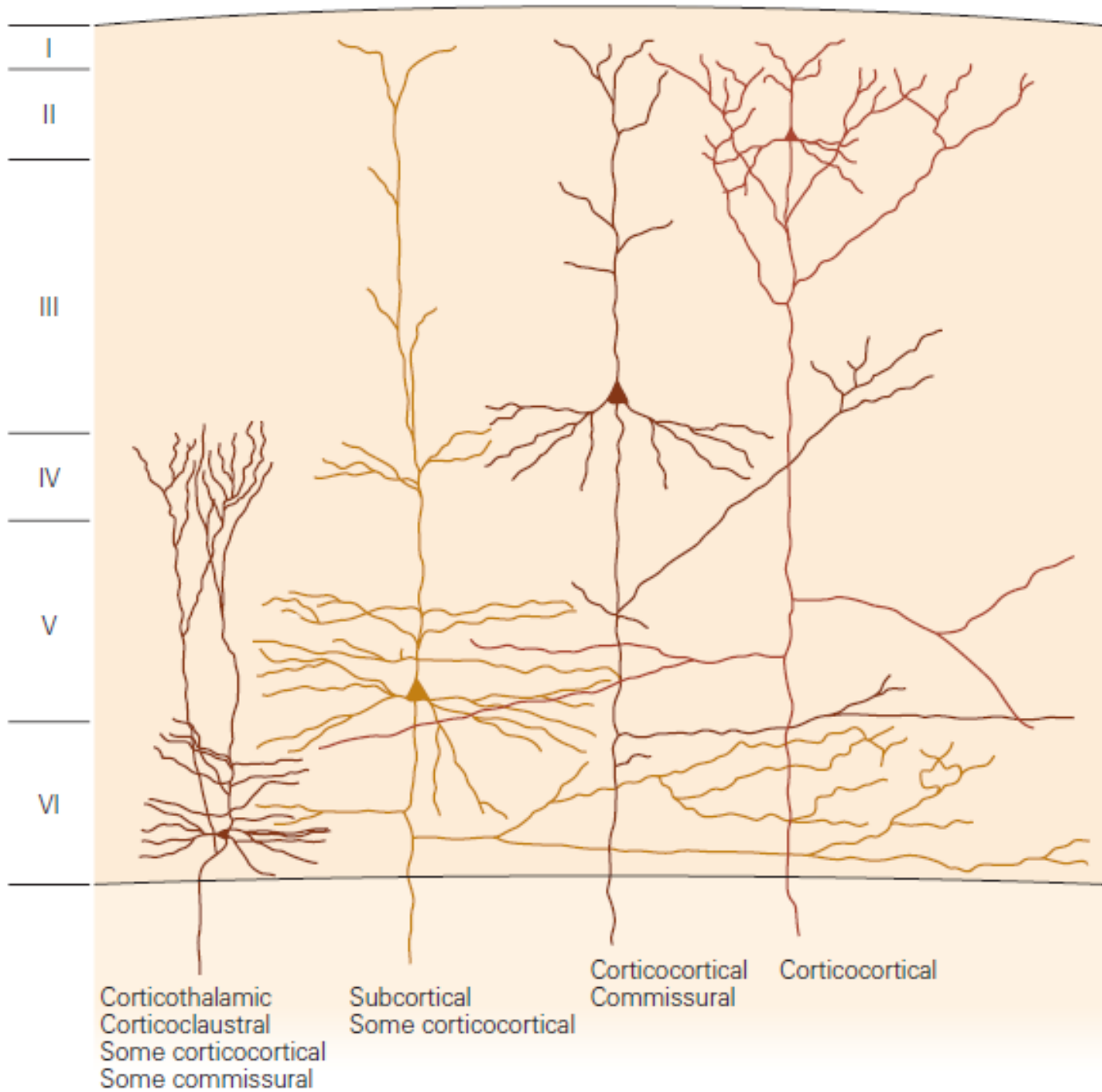
Aferencias Talámicas

- Específicas
- Inespecíficas

Aferencias Talámicas



Eferencias



Neurotransmisores

- Intrínsecos: Glutamato, GABA
- Extrínsecos: Norepinefrina, Serotonina, Dopamina.

YO SABÍA EXACTAMENTE QUIEN ERA.
MI CONFLICTO DE IDENTIDAD EMPEZÓ
CUANDO CONOCÍ LA OBRA DE UN TAL MAGRITTE.

