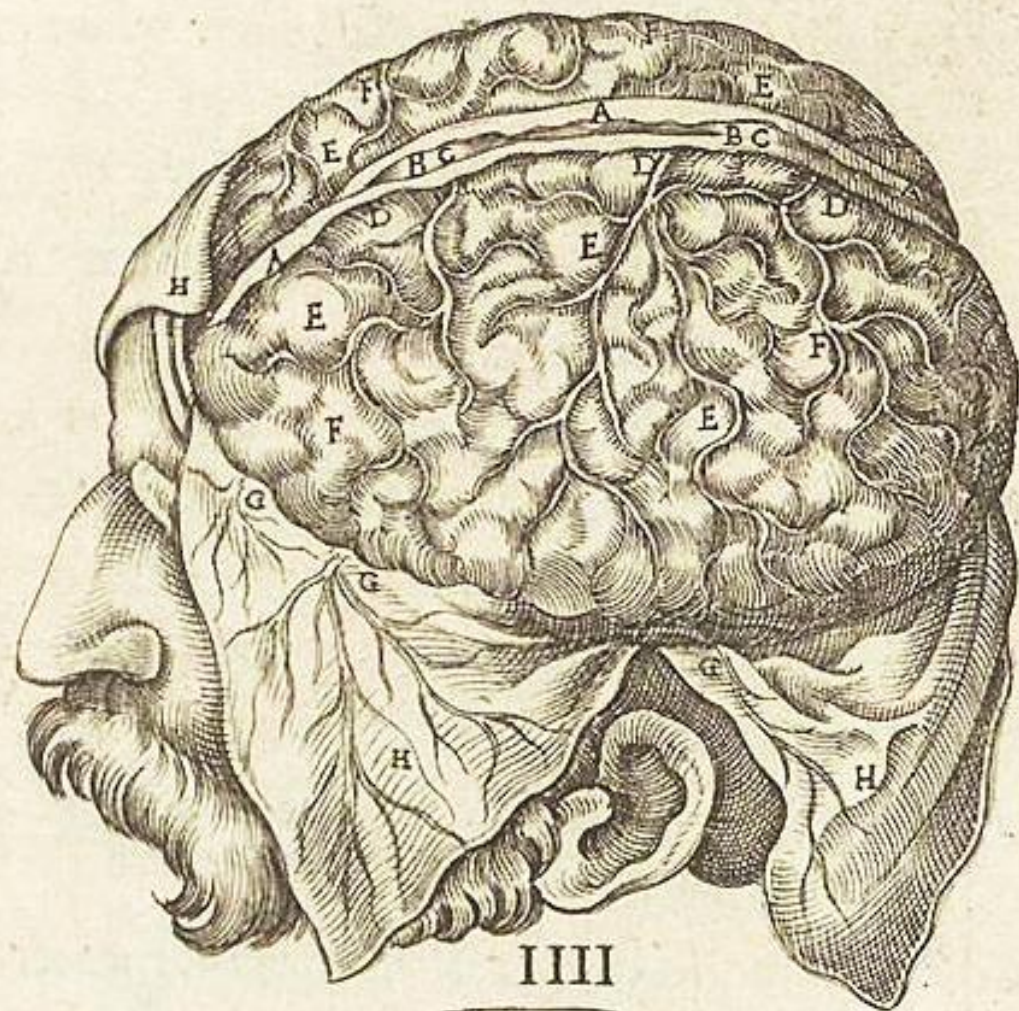
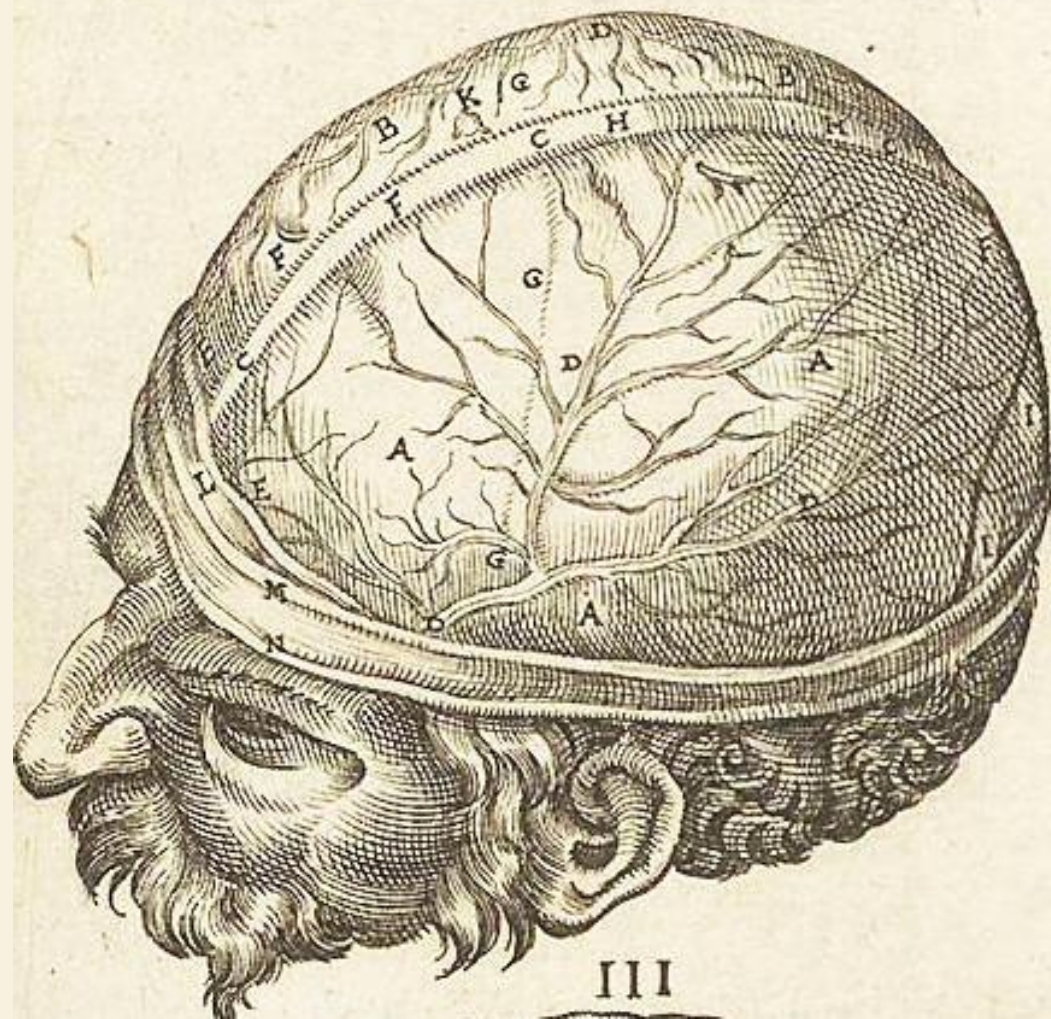


# Topografía Externa de los Hemisferios Cerebrales

*Nelson D. Villalba M.D. M.Sc.*

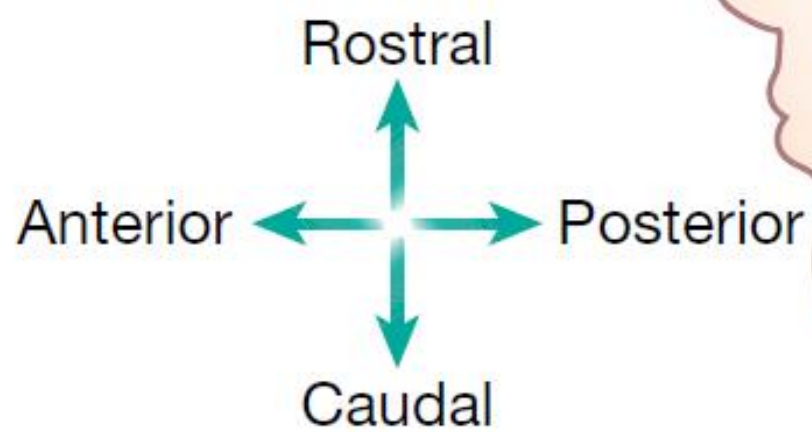
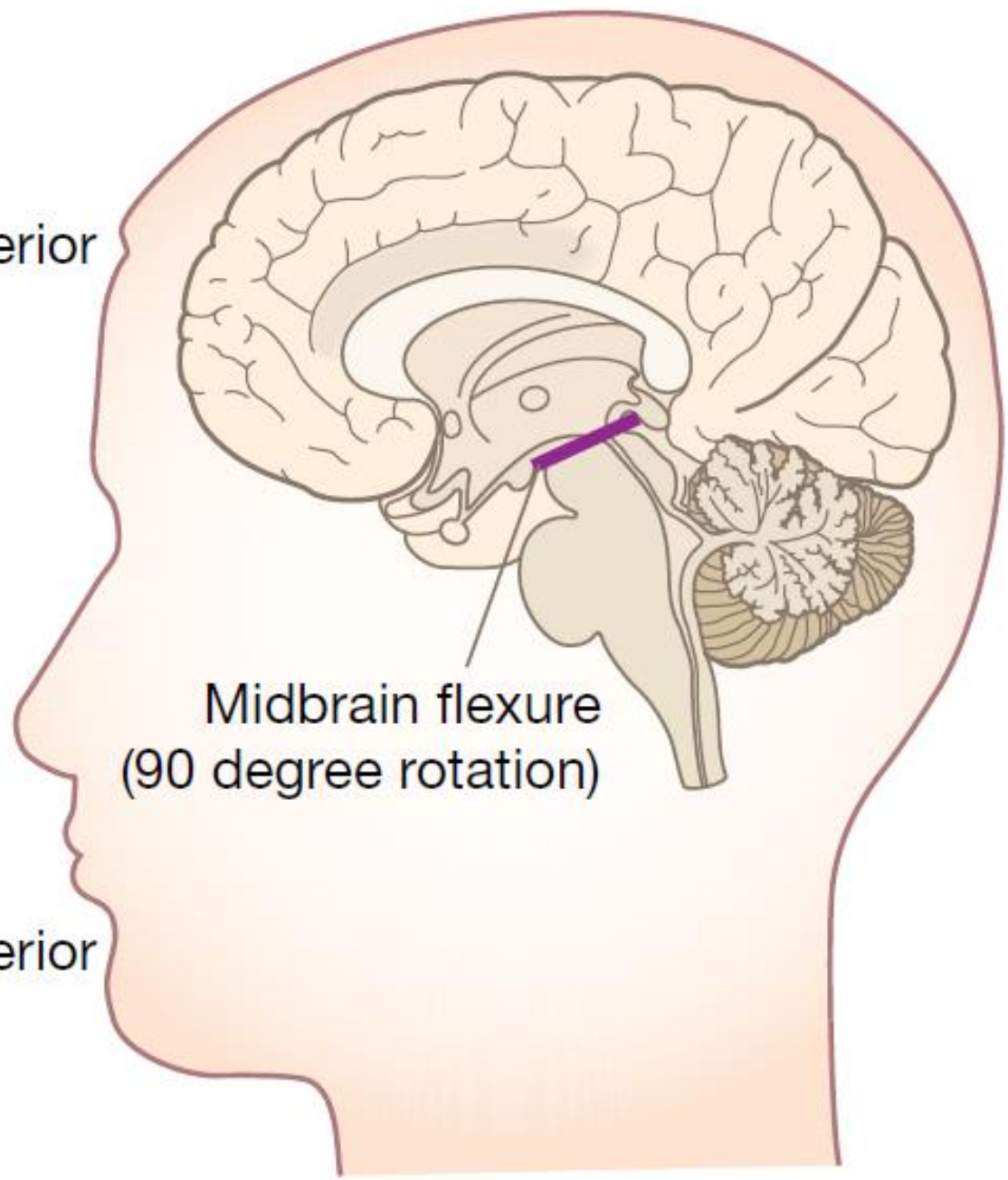
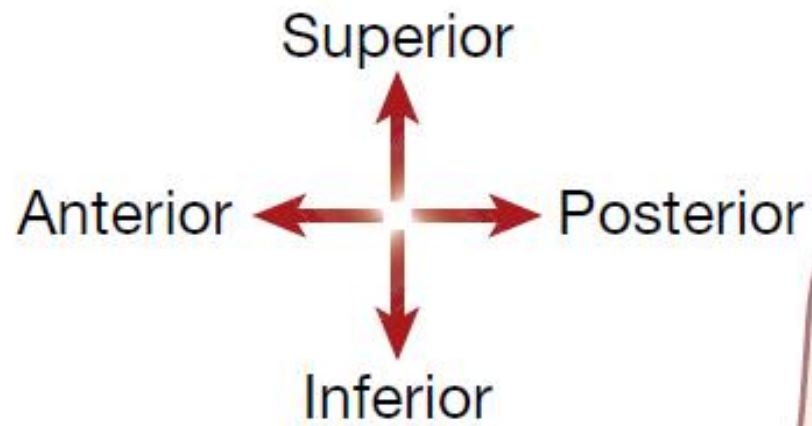
FIGVRA. I.

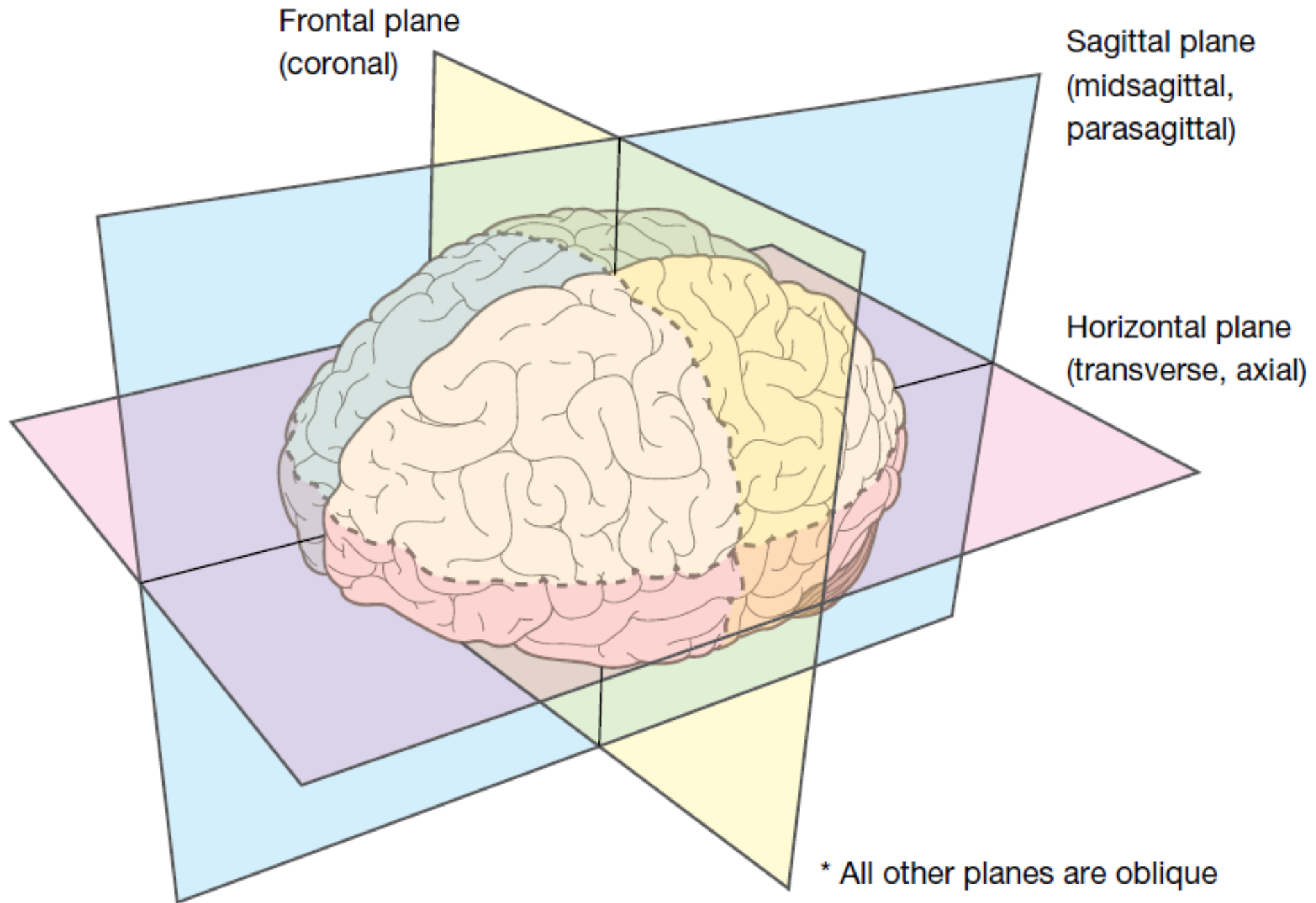
II



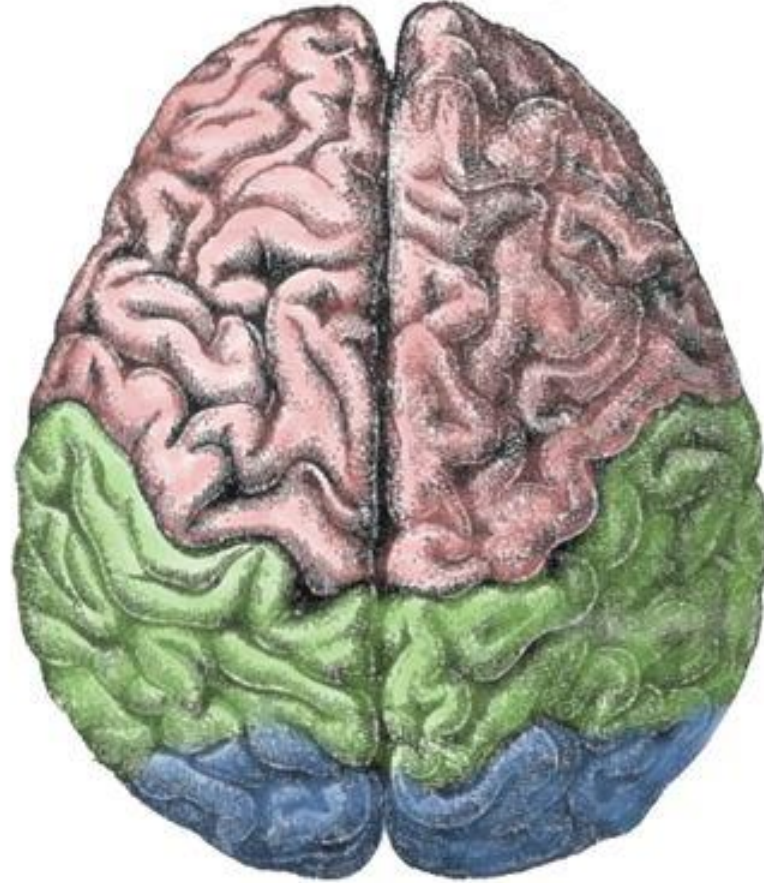
III

IIII



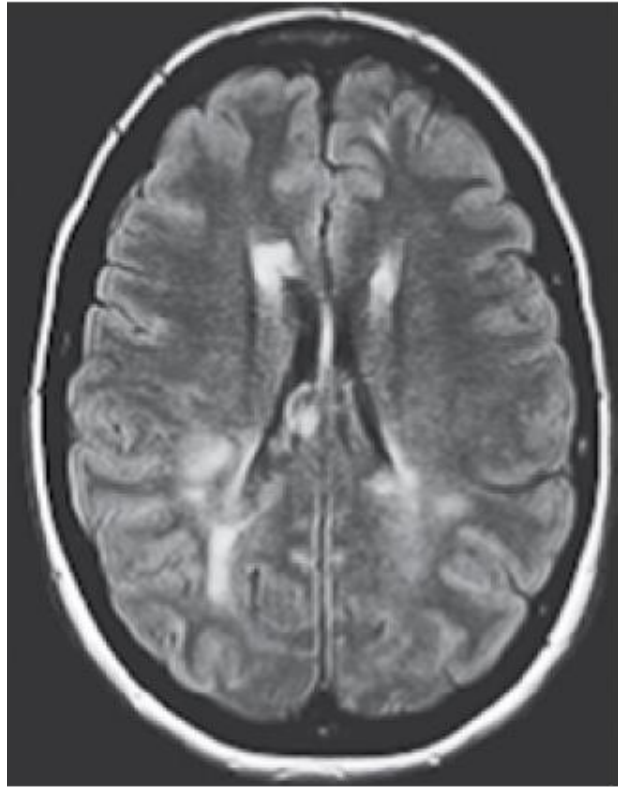


Lateral

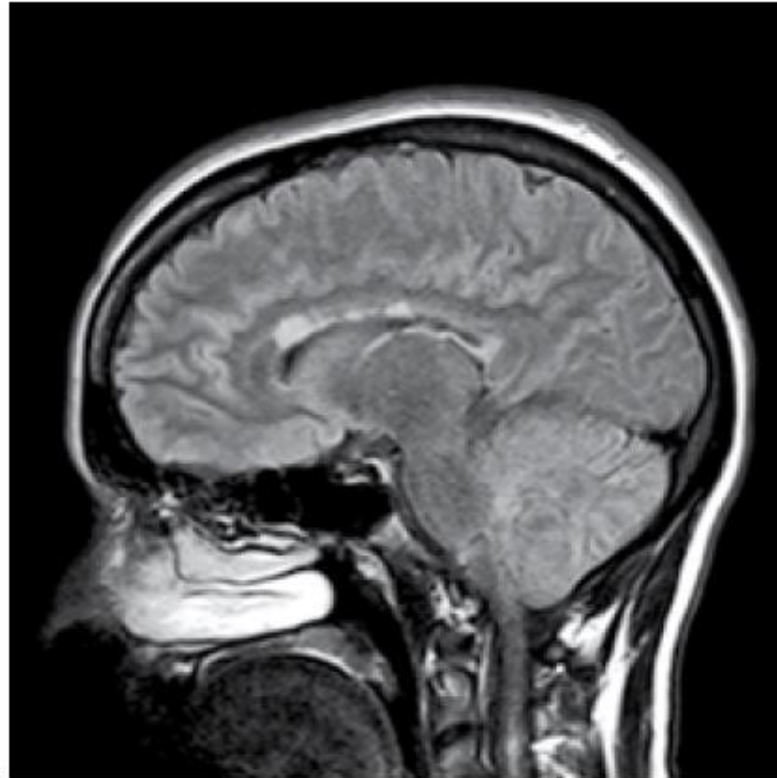


Medial

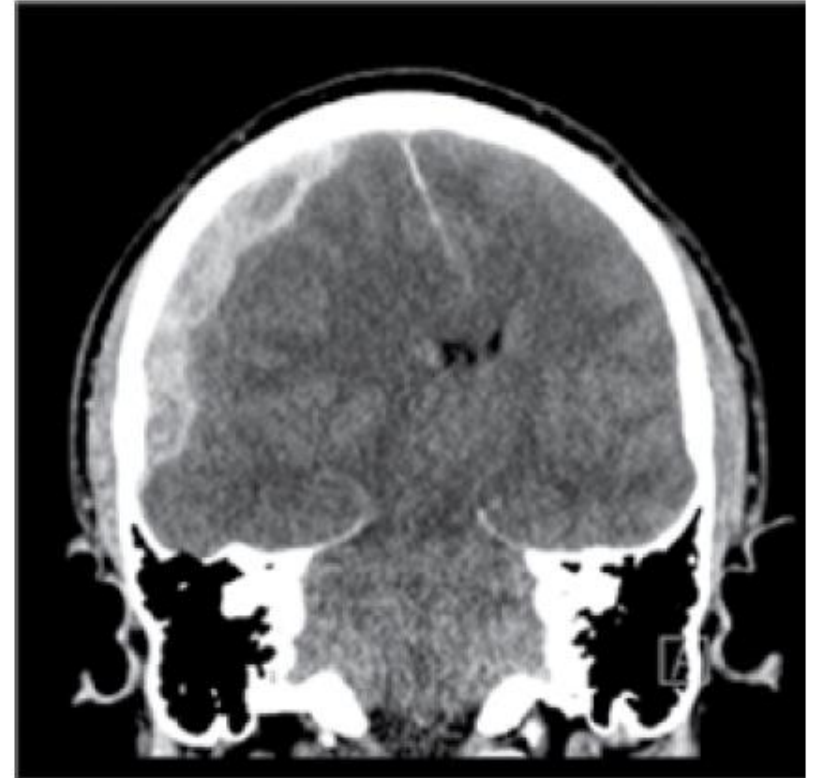




Horizontal

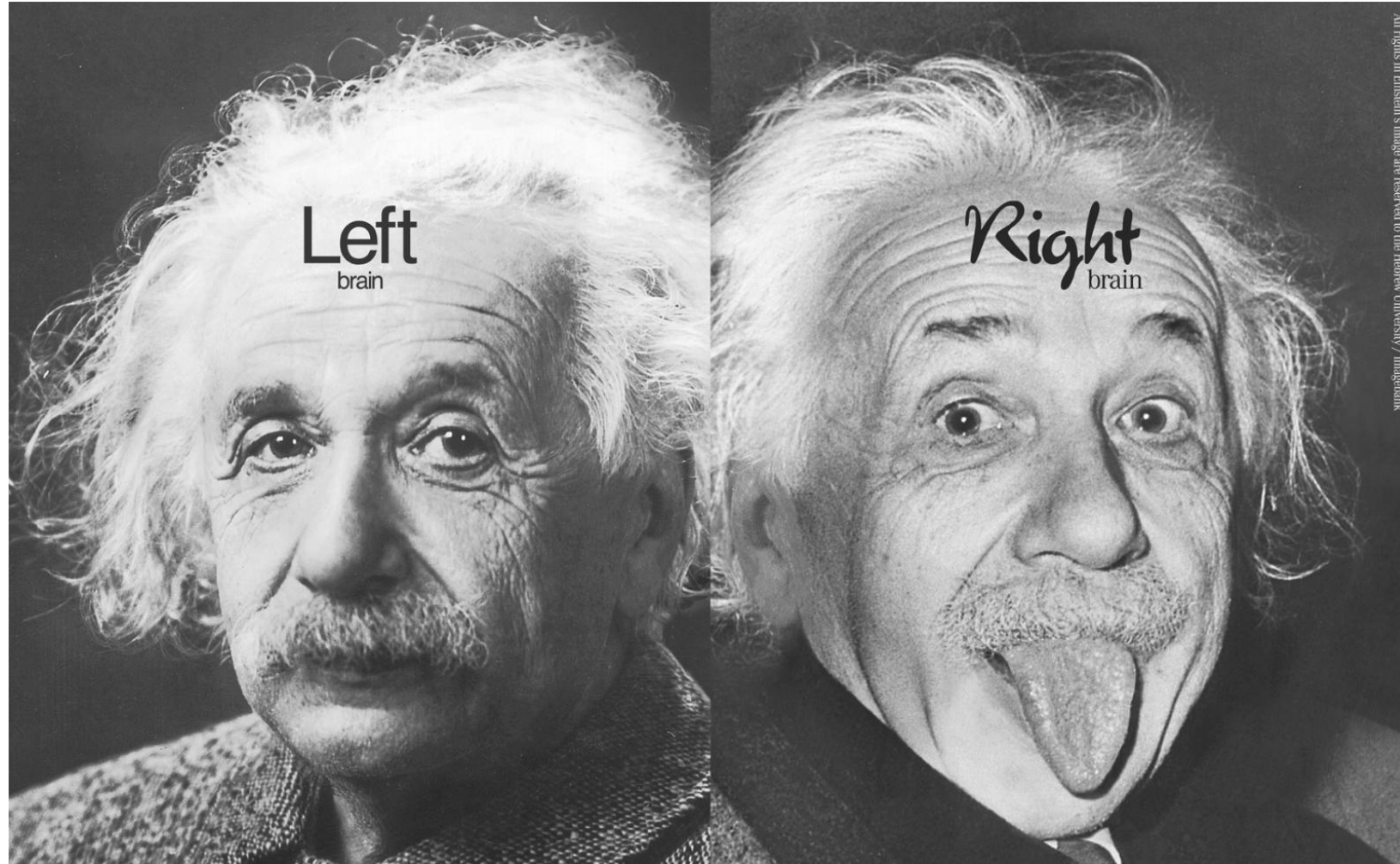


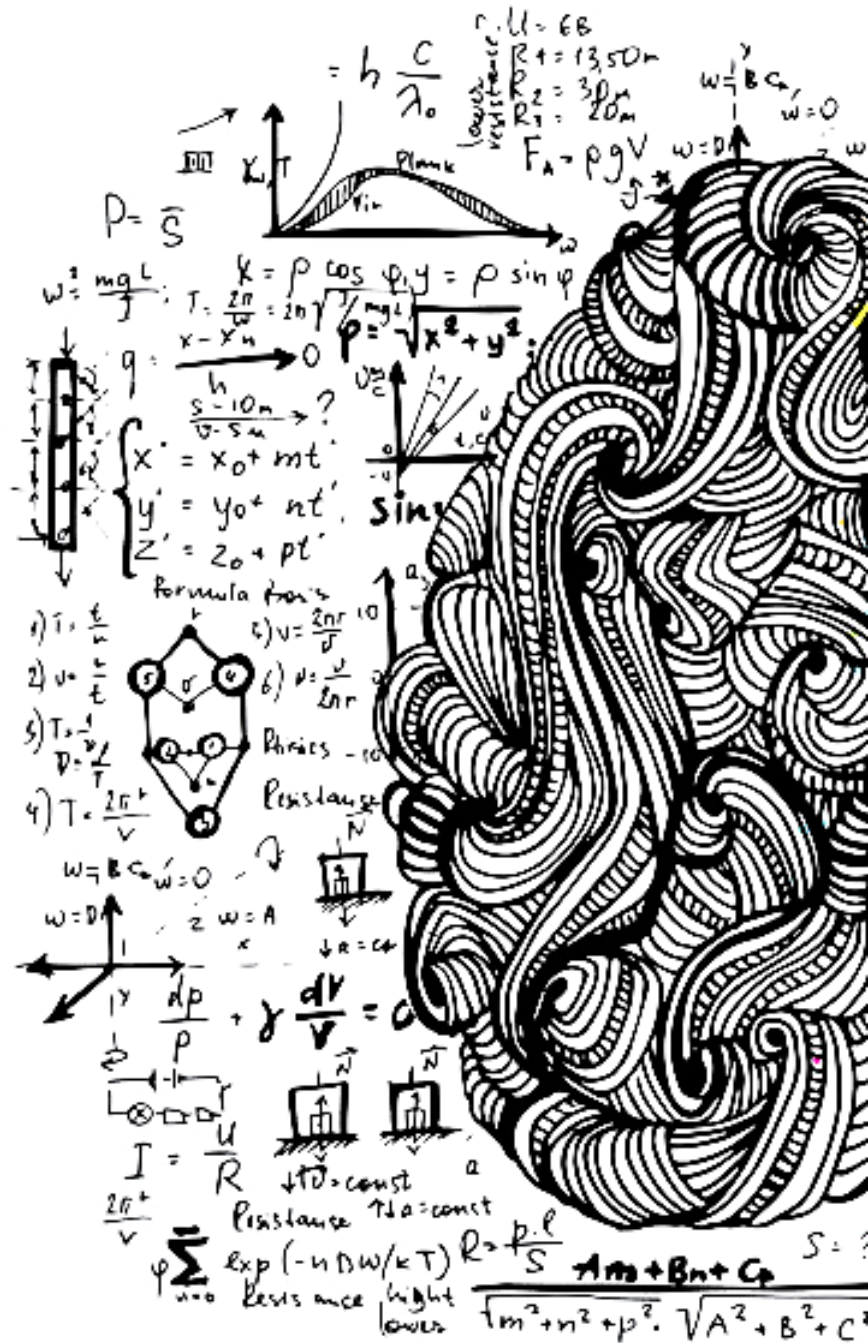
Sagittal



Frontal

# El Cerebro Dividido





# Hemisferio Izquierdo

- Lógico
- Secuencial
- Racional
- Verbal
- Analítico
- Objetivo
- “Ve” las partes

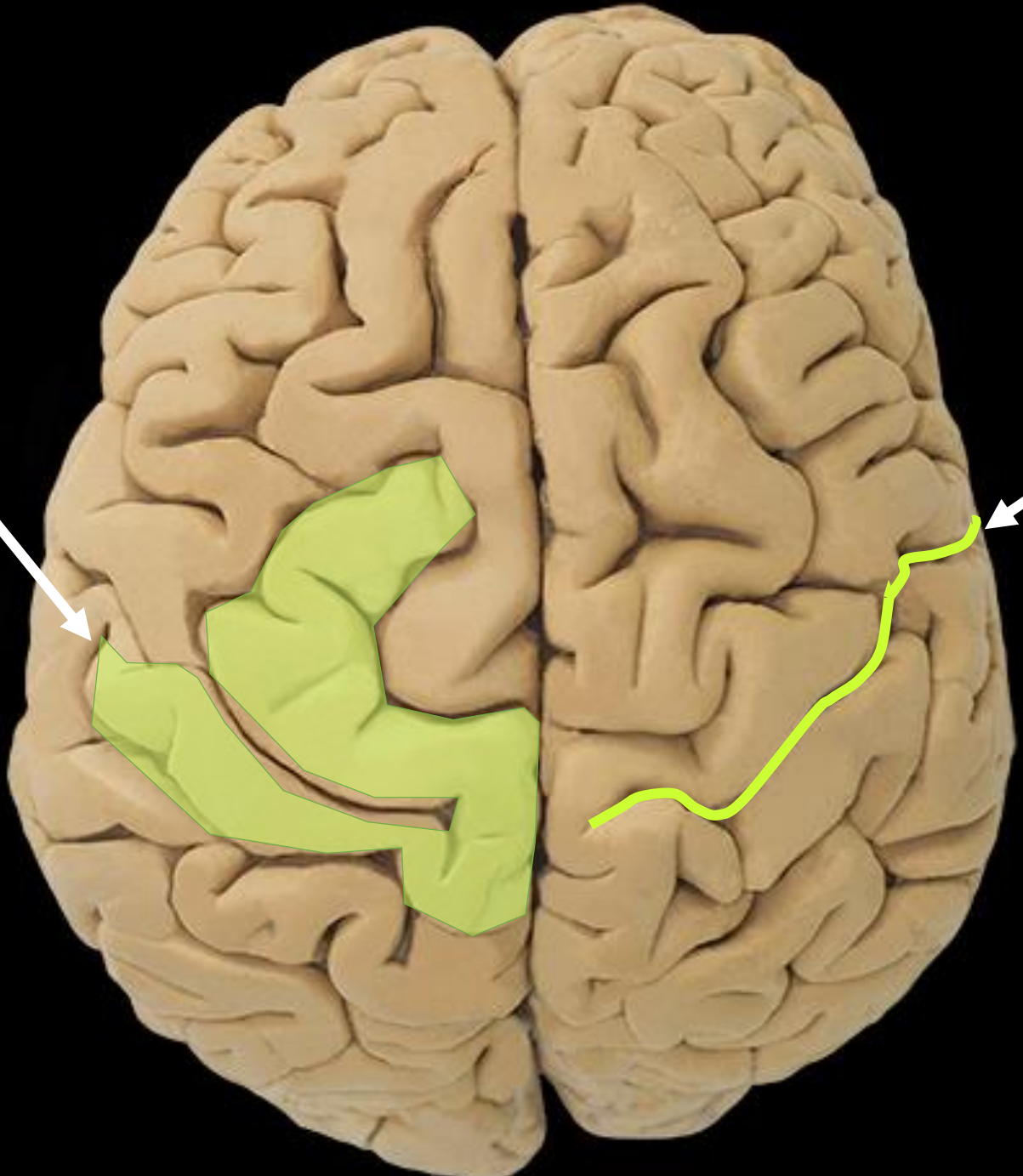


# Hemisferio Derecho

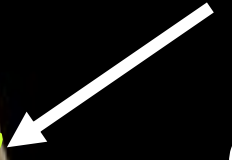
- Aleatorio
- Intuitivo
- Holístico
- No Verbal
- Sintetizador
- Subjetivo
- “Ve” el todo



**Giro  
o  
Circunvolución**



**Surco  
o  
Cisura**



# Cara Superior - Dorsolateral



**Cara Basal**



**Cara Medial**



