



SAVING WILDLIFE

SAVING WILD PLACES

CONSERVATION CHALLENGES

DONATE

Enter Keyword SEARCH



MAIL ORDER

A portion of the proceeds from the Save Vanishing Species stamp goes to conservation

BUY NOW

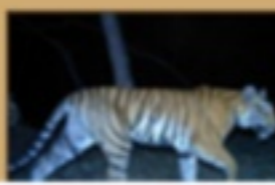
ABOUT US SIGN UP TAKE ACTION VISIT OUR PARKS

NEWS & FEATURES



Restoring the River

From urban blight to beautiful oasis, the Bronx River has experienced a remarkable transformation. Today, it's a bubbling ecosystem for wildlife and fun





## VISION:

WCS envisions a world where wildlife thrives in healthy lands and seas, valued by societies that embrace and benefit from the diversity and integrity of life on earth.

## MISSION:

WCS saves wildlife and wild places worldwide through science, conservation action, education, and inspiring people to value nature.



# Wildlife Conservation Society

## ANNUAL REPORT

2013



species that we are working to save. The cover of this annual report features the forest elephants at Dzanga Bai, in the Central African Republic. WCS has been studying this population for two decades. But the pressure on elephants in Africa is increasing due to growing demand for ivory. To combat this crisis, we stepped up our game and designed a three-pronged strategy to stop the killing, stop the trafficking, and stop the demand for ivory.

We convened 17 conservation groups and developed a new partnership to save African forest elephants, announced at the Clinton Global Initiative in September (p. 19). In addition, we launched an advocacy campaign called 96 Elephants to end the poaching of nearly 35,000 elephants every year in Africa. We were pleased to announce that the Association of Zoos and Aquariums (AZA) joined as a partner in this effort. We know partnerships

INSPIRAR

biological diversity while ensuring a positive impact on millions of people globally.

We identified five core strategies to achieve our mission:

- We will use science to **discover**;
- We will **protect** species, landscapes, and seascapes, focusing on 15 priority regions and 15 priority species;
- We will **inspire** people to care about animals and nature through education and outreach, our zoological parks in New York, and our field programs across the world;
- We will **build a stronger platform** by strengthening vital aspects of our business - from human capital to technology;
- We will **leverage** our resources through partnerships and greater involvement in public policy.

This year's report documents progress across all areas of WCS. A few examples:

listing by CITES to protect five new shark species, freshwater sawfish, and two ray species (p. 29); and

- We helped to identify an unknown species of humpback dolphin off the coast of Australia and a new bird species in Cambodia's capital city, Phnom Penh (p. 17).

We work across 6.1 million square kilometers (3.6 million square miles), both land and sea, protecting 40 percent of the world's terrestrial biodiversity and 55 percent of its marine biodiversity.

We invite you on this journey, as we did our friends Art Ortenberg and Bob Wilson - longtime champions of conservation who died this year - and so many others over the past century.

Ward W. Woods  
Chair of the Board

Cristián Samper  
President & CEO

DESCUBRIR

PROTEGER

CONSTRUIR UNA PLATAFORMA FUENTE

APALANCAR

collection - back from the brink of extinction.



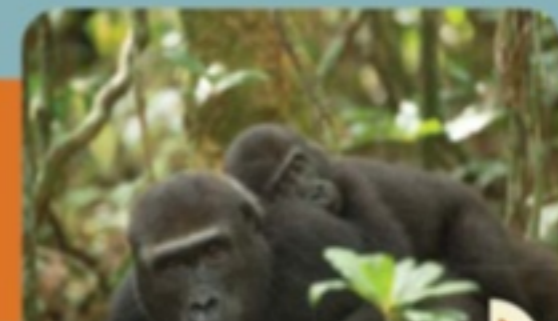
### THE UNPARALLELED STRENGTH OF WCS

In order to achieve our mission, WCS follows three core strategies in its work:

- We **DISCOVER** and understand priority wildlife and wild places through science;
- We **PROTECT** priority wildlife and wild places through conservation action; and
- We **INSPIRE** people to care about wildlife and wild places through education and public engagement.

Unique among conservation NGOs, WCS manages a diverse wildlife collection in its NYC parks while simultaneously engaging in a robust global program of site-based conservation. Discoveries in the field have generated new thinking on how animals are cared for and presented in our zoos and aquarium. In turn,

## DISCOVER



from the obscure 30-pound nocturnal rodent Count

Conservation (DEC) and the Buffalo Zoo to save one of the

Headstarting young hellbenders helps them get to a size where



## WCS Achievements Discover

- WCS's China Program captures [first camera trap images](#) indicating the Critically Endangered Amur leopard – the rarest of all big cats in the wild – is breeding in China.
- Researchers from WCS, the American Museum of Natural History, and other institutions identify a previously unknown species of [humpback dolphin](#) in the waters off northern Australia.
- WCS and partners show how ecological changes related to climate change and deforestation are leading to [increased parasitism](#) of young nesting birds by fly larvae.
- A team of scientists led by WCS and the National University of Singapore reveals for the first time the presence of the pathogenic chytrid fungus in [amphibians sampled in Singapore](#).
- WCS and Panthera release [camera trap footage](#) from Uganda's Kibale National Park showing a rarely seen African golden cat.

they can't be preyed upon by trout and most other aquatic predators.

The researchers announced their discovery in the Oriental Bird Club's journal *Forktail*.

is found: the area centered in Phnom Penh where the Tonlé Sap, Mekong, and Bassac Rivers

[ BELOW ] WCS researchers working on the outskirts of Phnom Penh



## WCS Achievements

### Protect

- WCS and five other conservation organizations develop a free, open-source Spatial Monitoring and Reporting Tool – or SMART – to help rangers curb the illegal trade in wildlife.
- WCS Bronx Zoo health experts and partners produce the first-ever published study to genetically characterize canine distemper virus (CDV) in tigers and confirm its role in the death of Amur tigers in the Russian Far East.
- Scientists from WCS and the Kenya Marine and Fisheries Research Institute (KMFRI) help to design a better fish trap, reducing the impact of fishing on coastal reef systems.
- A white-cheeked gibbon baby – the first born at the Bronx Zoo since 2000 – debuts at JungleWorld in January 2013. A Critically Endangered species, the white-cheeked gibbon is native to Vietnam, Lao PDR, and China.
- WCS and partners inventory all 27 primate species in Tanzania to create roadmap for conservation in the most primate-diverse country in mainland Africa.



## WCS Achievements Inspire

- [Nam Nern Night Safari](#), an ecotour developed by WCS and Lao partners, wins prestigious World Responsible Tourism Award at the World Travel Mart in London, England.
- WCS Education receives funding from the National Center for Civic Engagement for a tiered mentor program that pairs teens with WCS Education staff and a [Fordham Univ. PhD candidate](#) to conduct urban ecology research at the Bronx Zoo.
- WCS [Run for the Wild](#) draws more than 5,250 participants to run and walk, increasing awareness of the plight of elephants globally while raising more than \$860,000 for conservation.
- WCS and Esri develop an [online story map](#) that combines spatial data, cartography, and web mapping tools to visually tell the story of the elephant poaching crisis.
- The [WCS Education Department's programs](#) for children five years old and under expands to 300 separate programs in 2013, further nurturing lifelong appreciation for conservation among New York City youth.

Pakistan and the U.S. State Department because there are no suitable facilities for snow leopards in Pakistan.

This past April, WCS was thrilled to announce that a cub sired by Leo was born to his mate Mava at the Bronx Zoo.

Leo's cub wasn't the only snow leopard birth at a WCS zoo this year. The Central Park Zoo debuted a pair of snow leopard cubs – the first born at that zoo. The twin cubs, expected to reach between

Central Park Zoo from the Bronx Zoo. Both adults are first-time parents. Snow leopards at the Central Park and Bronx Zoos are a part of the Species Survival Plan – a cooperative breeding



6 de 88

4

WILDLIFE CONSERVATION SOCIETY ANNUAL REPORT 2013



BY 2020, WCS WILL LEVERAGE OUR BEST SCIENCE, CONSERVATION, AND EDUCATION TO SCALE IMPACT ACROSS THESE 15 PRIORITY REGIONS:

- 1. **ARCTIC BERINGIA** Arctic coasts and seas of Alaska, Western Canada, and Russia
- 2. **ROCKY MOUNTAINS** North American coniferous forests
- 3. **EAST-CENTRAL BOREAL** Adirondacks, Northern Ontario, and boreal forests
- 4. **NEW YORK SEASCAPE** Coasts and seas of the Mid-Atlantic
- 5. **WESTERN CARIBBEAN AND MESOMERICA** Forests, coasts, and coral reefs in Belize, Cuba, Guatemala, Honduras, and Nicaragua
- 6. **ANDES AMAZON** Forests, grasslands, and wetlands of Bolivia, Brazil, Colombia, Ecuador, Peru, and Venezuela
- 7. **PAIAGONIA COAST AND STEPPE** Coast and steppe of Argentina and Chile

# WCS:2020

## MISIÓN

WCS salva la vida silvestre y paisajes silvestres en todo el mundo a través de la ciencia, acciones de conservación, educación e inspirando al ser humano a valorar la naturaleza.

## VISIÓN

WCS imagina un mundo donde la vida silvestre prospera en tierras y mares saludables, valorado por sociedades que adoptan y se benefician de la diversidad y la integridad de la vida en la tierra.

## VALORES

Respeto  
Rendimiento de Cuentas y Transparencia  
Innovación  
Diversidad e Inclusión  
Colaboración  
Integridad





VERSION ANTERIOR 2004

ELEMENTOS CENTRALES DE LA MISION

MISION CENTRAL



RETOS GLOBALES

#### Mission/Exhibits

Connect people to wildlife and WCS conservation priorities through a fun guest experience that facilitates learning and engages communities

##### Key Elements:

- Visitor experience
- Interpretation
- Animal exhibit space

#### Animal Care

Ensure animal well-being and contribute to the conservation of species in zoos and aquariums

##### Key Elements:

- Holding and husbandry
- Support
- Wildlife health care

#### Facilities Conditions

Strategically pair rejuvenation of exhibit and guest experience with the need to address aging infrastructure

##### Key Elements:

- Architecture
- Support systems MEP (Mechanical, Electrical, Plumbing)
- Information technology
- Campus infrastructure
- Exhibits - habitats and graphics

#### Financial Impact

Conduct feasibility studies for all proposed initiatives that include business plans that analyze the benefits and risks to operating and capital budgets

##### Key Elements:

- Business plan
- Operating budget
- Capital budget

#### Program Space

Include integrated space dedicated to facilitated learning and revenue-generating programs when feasible and appropriate

##### Key Elements:

- Education
- Public events
- Guest services
- Retail
- Food
- Restrooms
- Private events

#### Sustainable Design and Operations

Integrate high performance/green design and operations (energy, buildings, transportation)

##### Key Elements:

- Energy use
- Green management practices
- Green design

made in USA

March 2015

M T W T F

1 2

3 4 5 6 7 8 9

10 11 12 13 14 15 16

17 18 19 20 21 22 23

24 25 26 27 28 29 30

IDEAS.

ENTREVISTA  
CRISTIAN  
SAMPEL

NOU/2014 / NY

200 / CALI

LOS ZOOLOGICOS NO SOLO SON  
LUGARES PARA LA EXHIBICION  
Y LA RECREACION

SE DEBEN  
INTEGRAR  
CON EL  
ENTORNO.

PARA EL ZOO/CALI  

---

LUGAR IDEAL  
CONSERVACION:  
LOS FARALLONES  
DE CALI

LOS  
FAIRAWONES  
DE CALI

NO VISTO  
COMO UN LUGAR  
COMO UN CONSERVADOR!

DESARROLLAR  
PROYECTOS  
VIDA SILVESTRE

- ALIANZA:
- PARQUES NAUWNAUES
  - UNIVERSIDADES
  - AUTONLO. AMB.
  - WCS/CALI PAQU  
FRANCO.

PROGRAMA DE  
CONSERVACION

PROFESIONALES  
PERSONAS  
RETORNAROS/PHD



# PROYECTOS DE CONSERVACION VIA SILVESTRE

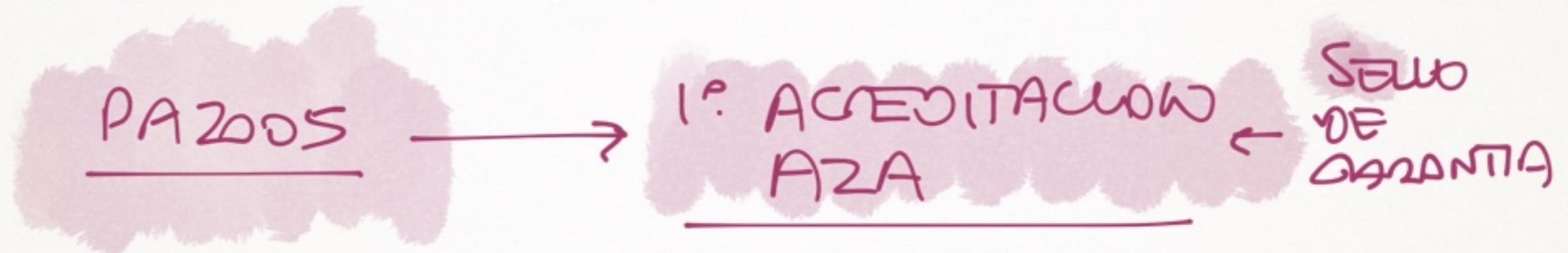
↓  
EN SUS ESPACIOS NATURALES.

↓  
DESARROLLO  
INVESTIGACIONES.

↓  
PUBLICACIONES.

↓  
NEEDS  
GLOBALES  
DE  
CONSERVACION

↘  
BIOLOGIA DE LA  
CONSERVACION



CREIBILIDAD EN LA RED - PROFESIONALISMO  
ACTIVACION/HACER

# PAZODS

1. ACREDITACION AZA

2. CONSERVACION

- IN

- OUT/ENCAMPO

# MAS IDEAS

ESPECIES  
LOCALES

PARQUE.

IN

OUT

CONEXION  
ESPACIOS  
CONTEMPORANES.

JARDIN

ACUARIO

PLANTAS  
LOCALES

PECES  
LOCALES

INTEGRAR UN  
MENSAJE DE  
LOCALIDAD.

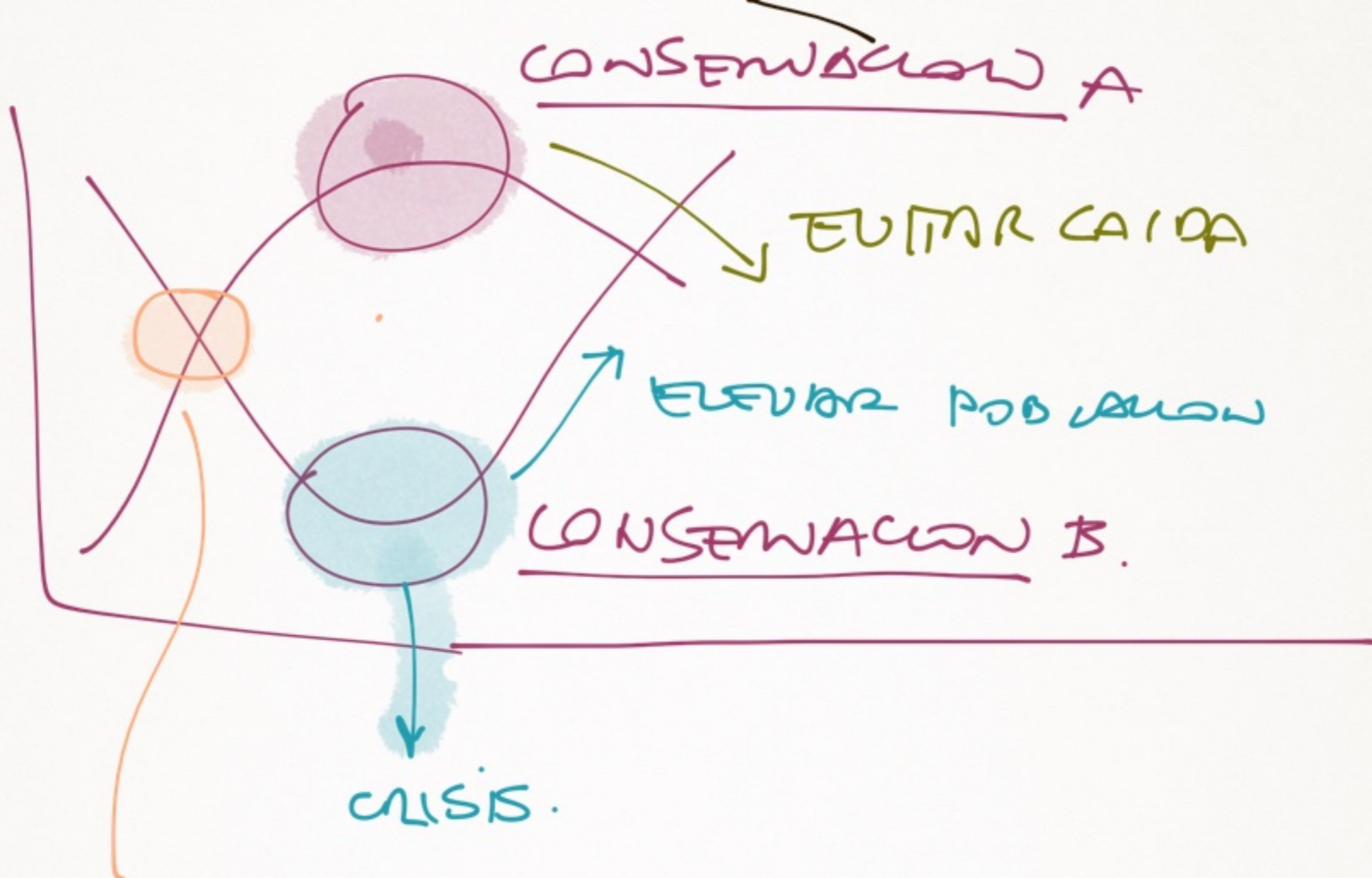
EXHIBICION

MAS  
IDEAS:



REFLEXION SOBRE  
CONSERVACION

PROCESO ESTRATEGICO ZOO



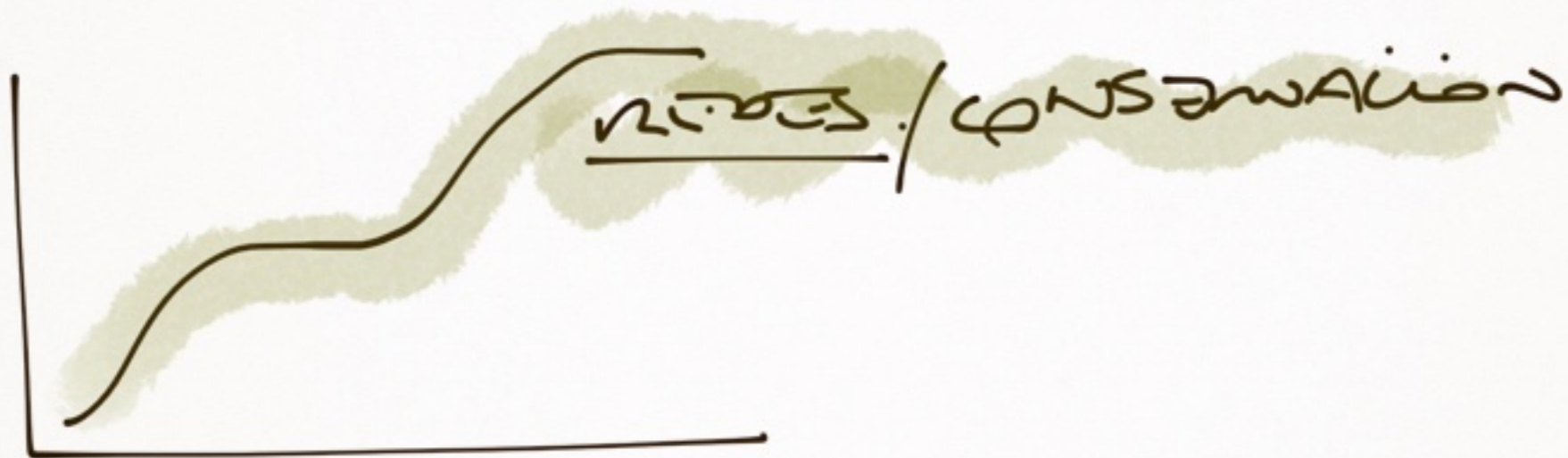
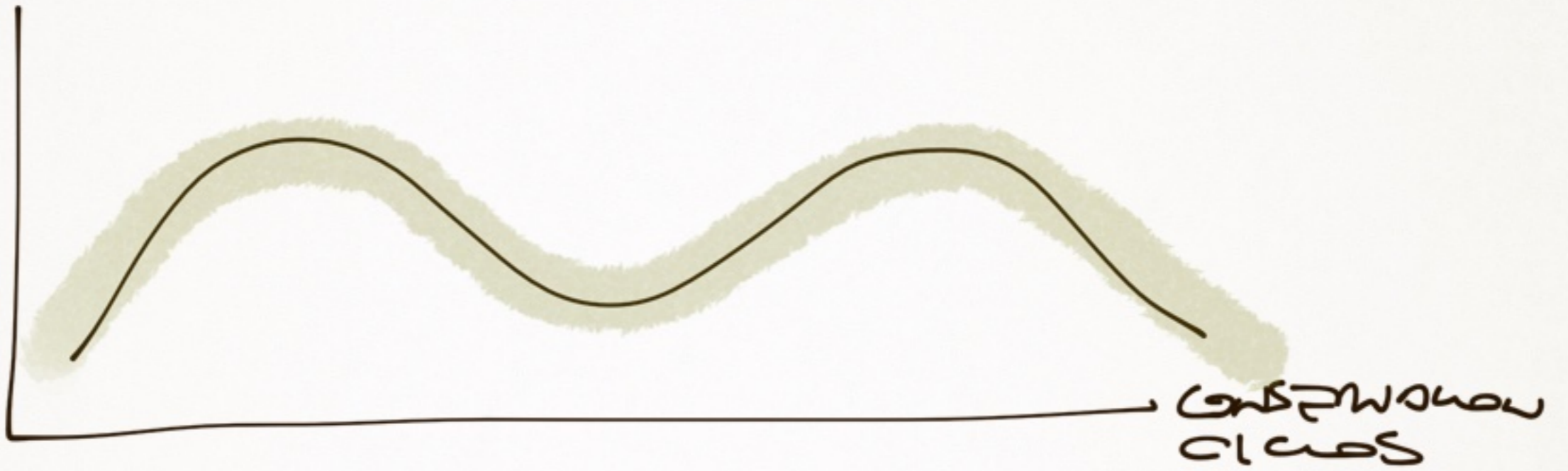
TOMA DECISION?

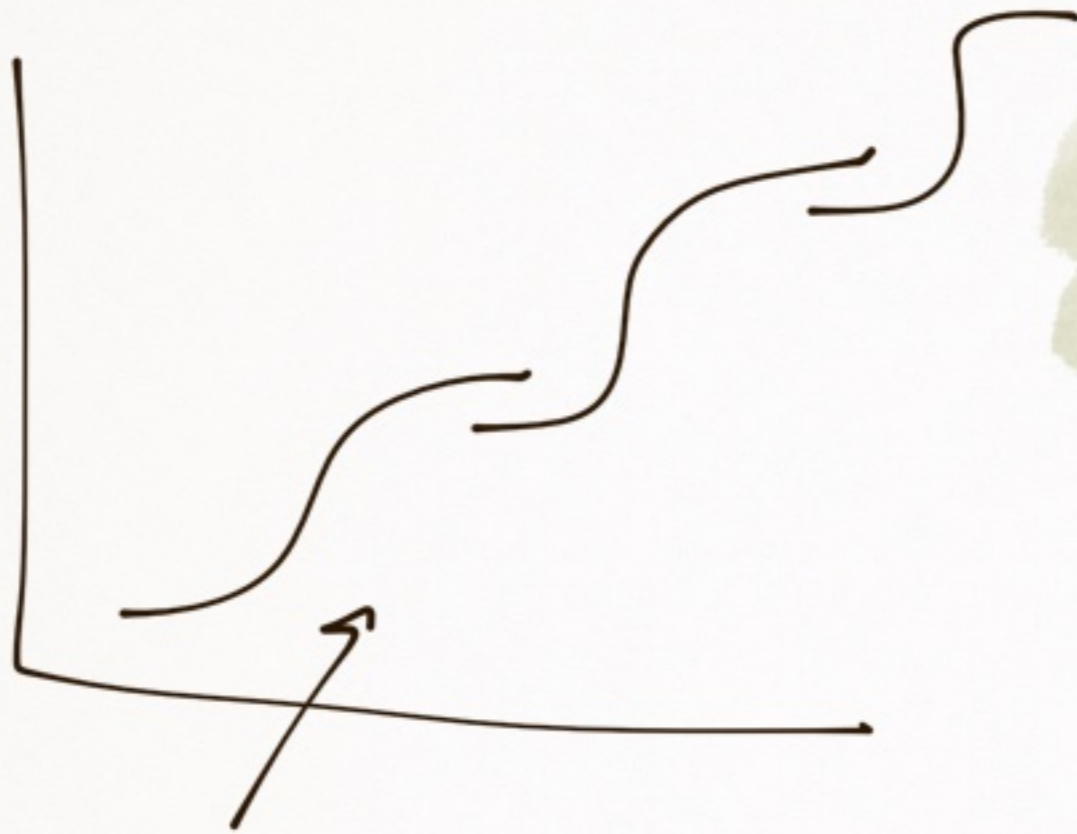
[A/B/]

- ESPECIE
- EDUCACION
- INVESTIGACION LABORATORIO

? CONECCION

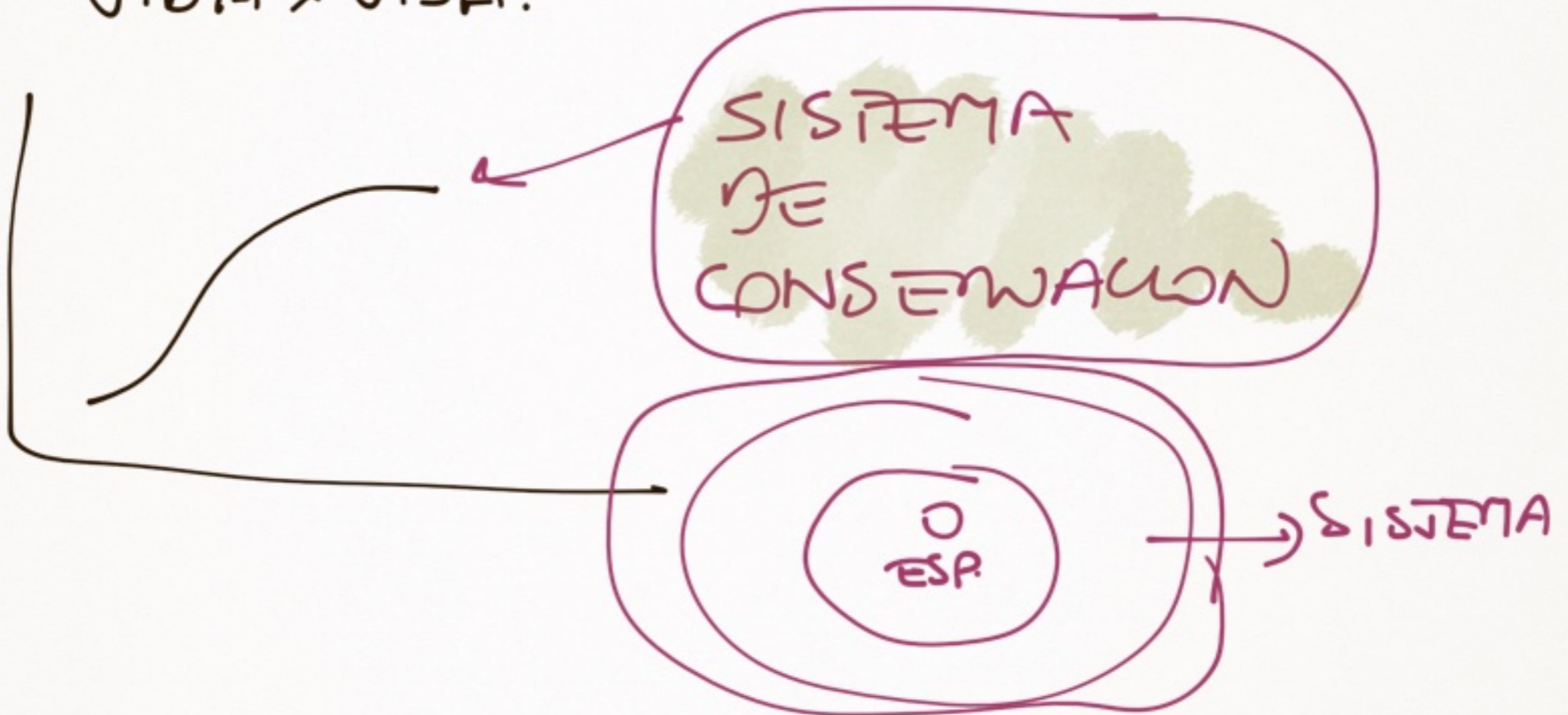
- VIVIENTE
- BIBLIOTECA
- AREAS?



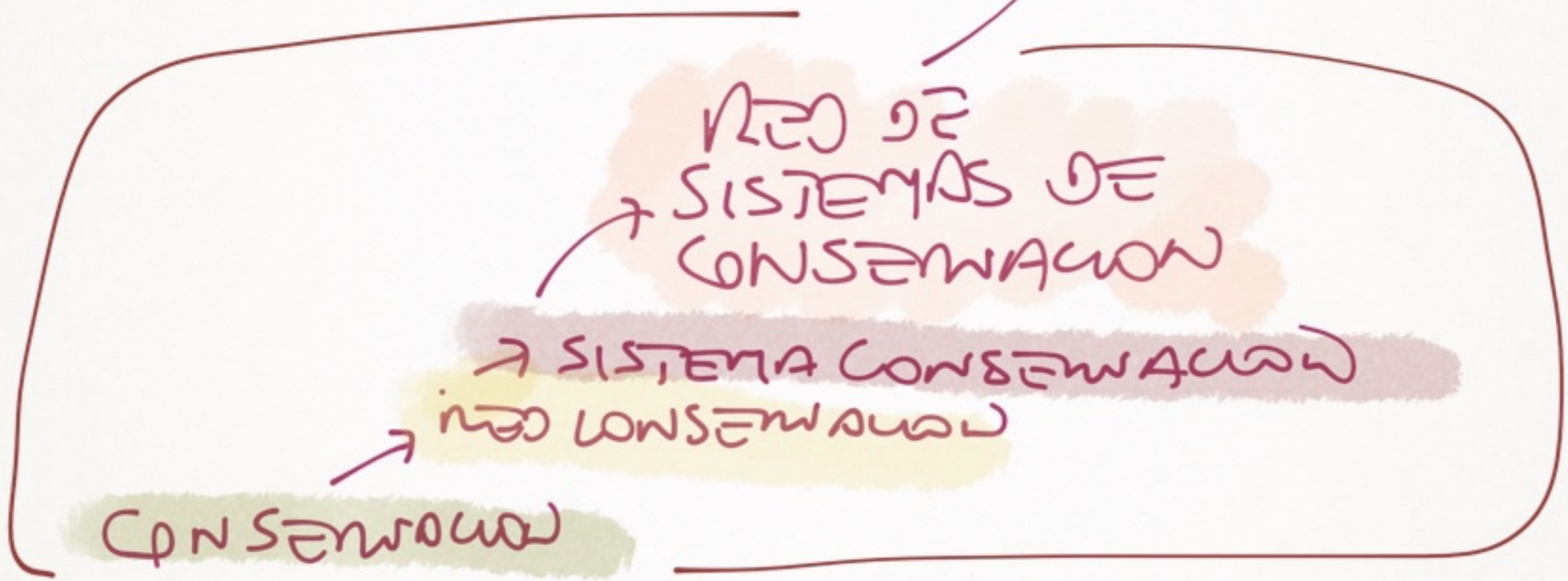
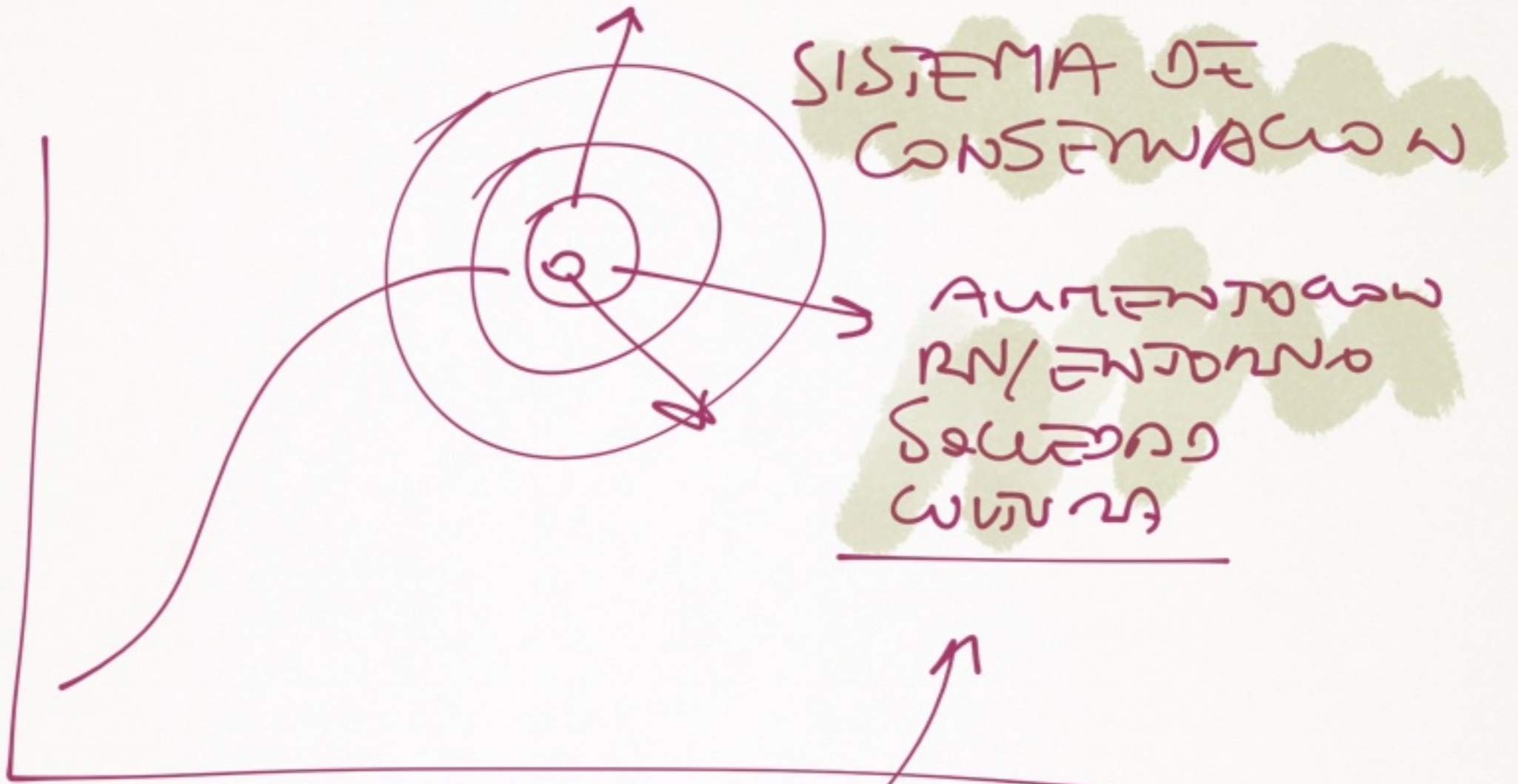


INNOVACION  
ABIERTO  
CONSERVACION

VIDA x UIDA.

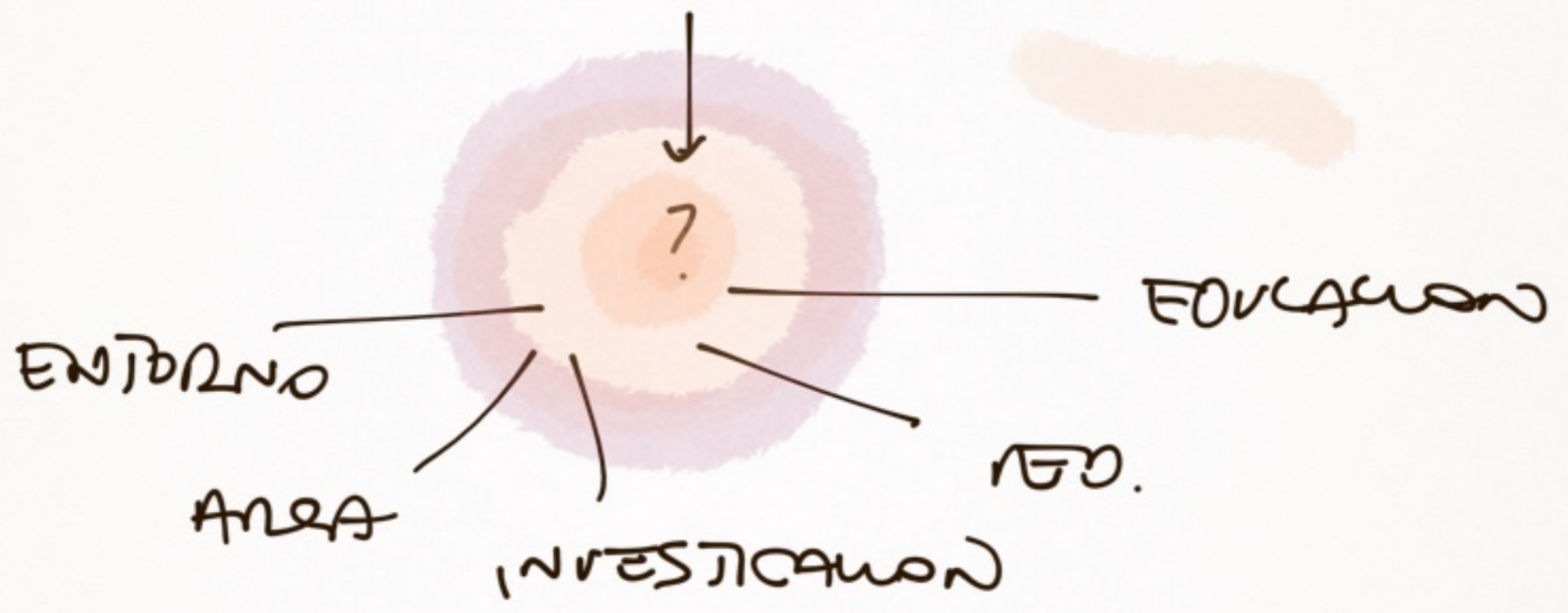
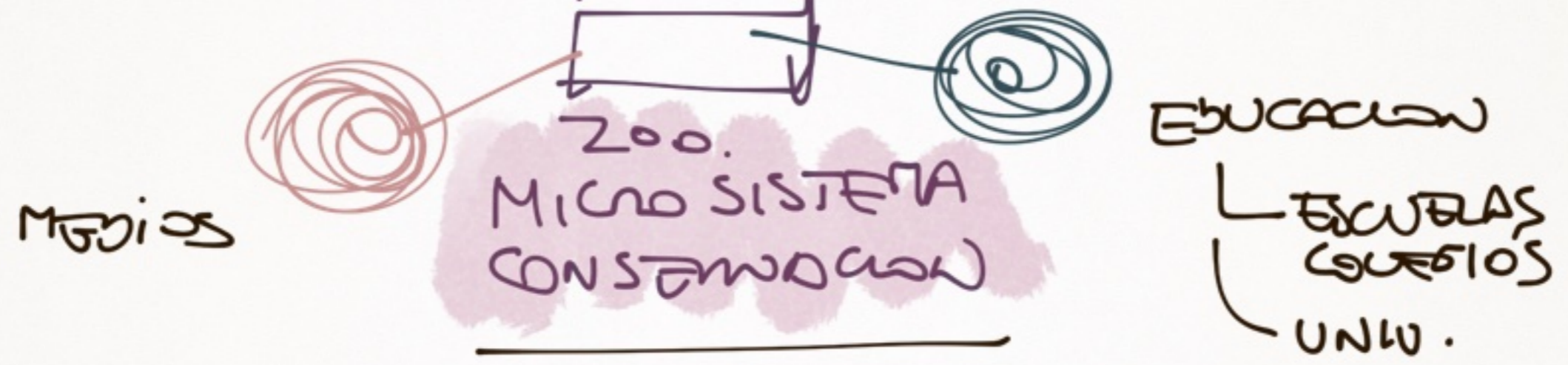


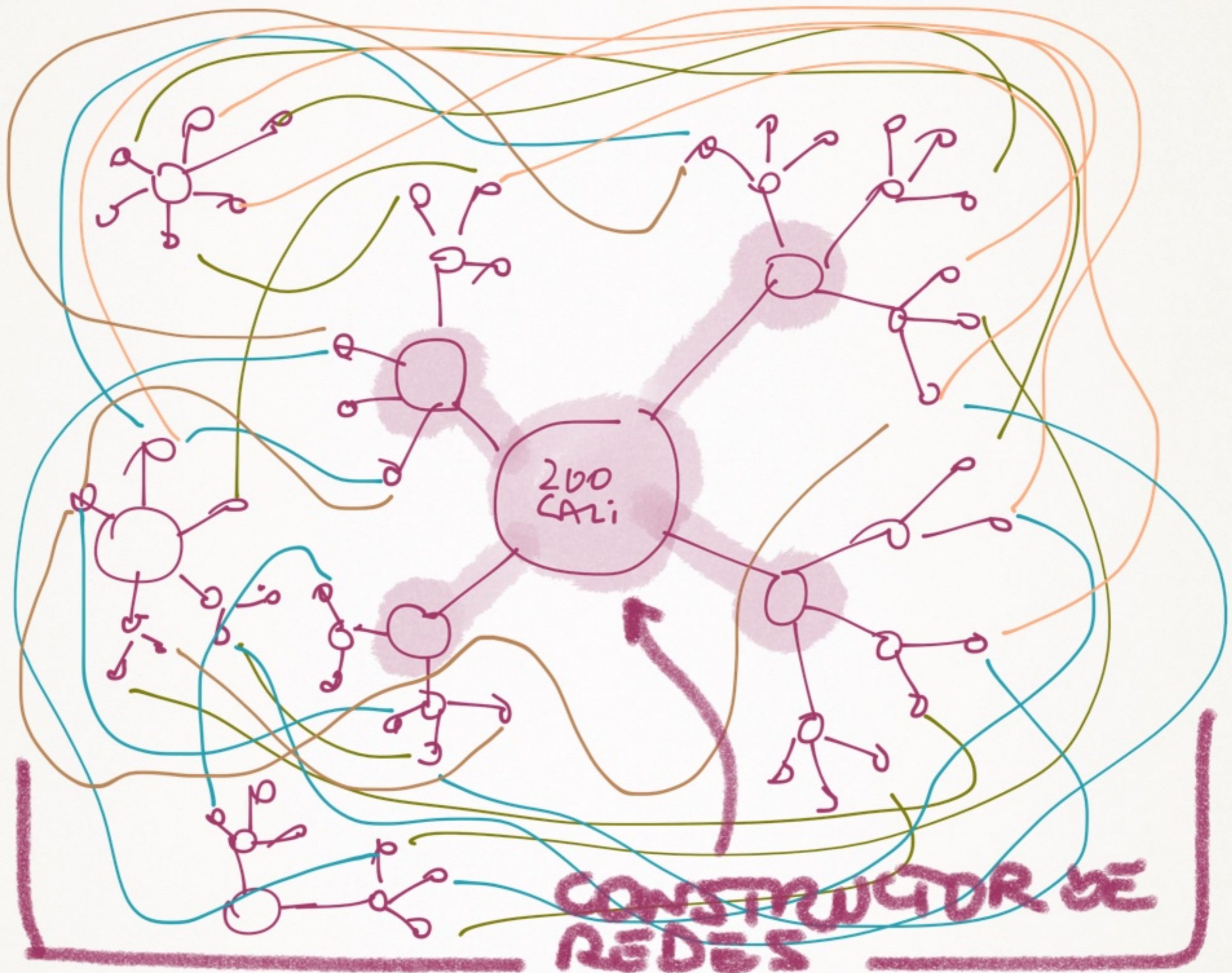






SISTEMAS DE CONSERVACION → INTERACCION CON OTROS SISTEMAS.





CONSTRUCTOR DE  
REDES